

ABILENE, TEXAS

ILS or LOC W RWY 16

LOC I-TYY 109.9	APCH CRS 164°	Rwy Idg 13,499 TDZE 1790 Arprt Elev 1799	[USAF]	DYESS AFB (KDYS)
---------------------------	-------------------------	---	--------	------------------

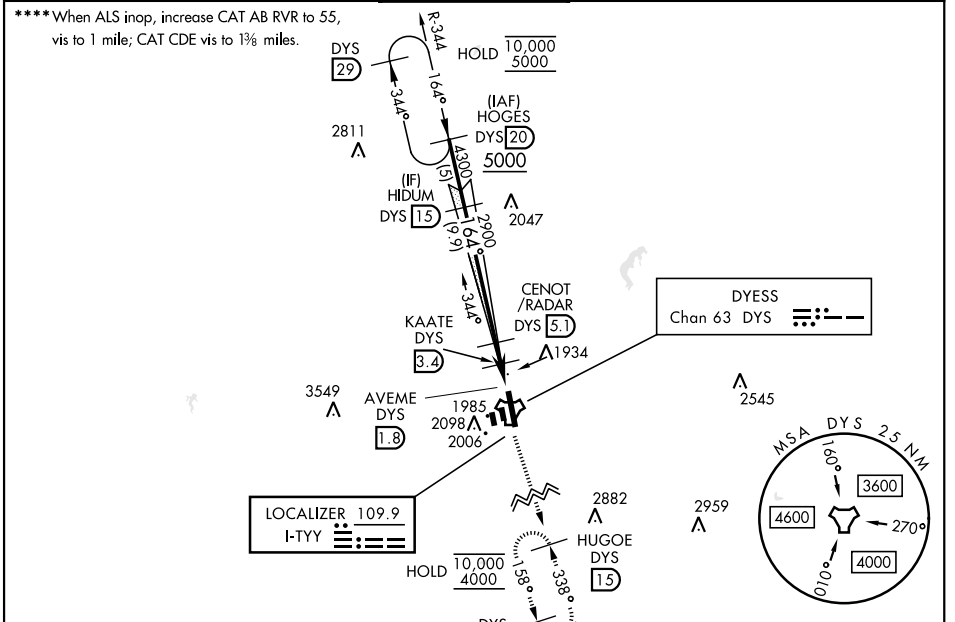
RADAR or DME required.

* When ALS inop, increase RVR to 40 and vis to 3/4 mile.
 ** When ALS inop, increase CAT AB RVR to 55, vis to 1 mile; CDE RVR to 60, vis to 1/2 mile.
 *** Circling to other than Rwy 34 not authorized.

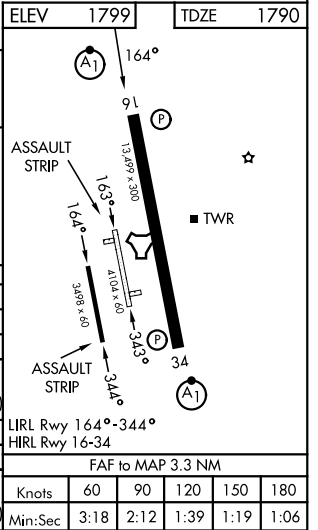
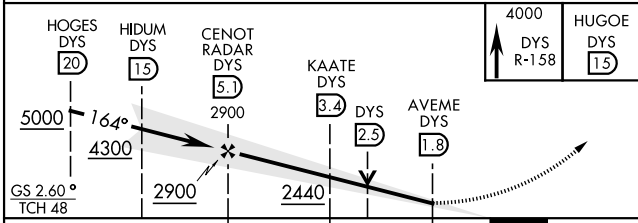
ALSF-1

MISSED APPROACH: Climb to 4000 via DYS TACAN R-158 to HUGOE and hold.

ATIS ★ 269.175	ABILENE APP CON 125.0 338.3 EAST 127.2 282.3 WEST	DYESS TOWER 133.0 257.675	GND CON 118.35 275.8	ASR
--------------------------	---	-------------------------------------	--------------------------------	-----



EMERG SAFE ALT 100 NM 4600	ELEV 1799	TDZE 1790
----------------------------	-----------	-----------



CATEGORY	A	B	C	D	E
S-ILS 16*	1990/24		200	(200-1/2)	
S-LOC 16**	2260/24	470 (500-1/2)	2260/50	470	(500-1)
CIRCLING ***	2300-1 510 (600-1)	2320-1 530 (600-1)	2440-1 1/4 650 (700-134)	2480-2 1/4 690 (700-214)	2540-2 3/4 750 (800-234)
KAATE FIX MINIMA					
S-LOC 16****	2200/24	410 (500-1/2)	2200/40	410	(500-3/4)
CIRCLING ***	2300-1 510 (600-1)	2320-1 530 (600-1)	2440-1 1/4 650 (700-134)	2480-2 1/4 690 (700-214)	2540-2 3/4 750 (800-234)

ABILENE, TEXAS 32°25'N-99°51'W DYESS AFB (KDYS)

Amtd 4 19MAR26

ILS or LOC W RWY 16

SC-2, 11 JUN 2026 to 09 JUL 2026

SC-2, 11 JUN 2026 to 09 JUL 2026

LIRL Rwy 164°-344°	FAF to MAP 3.3 NM					
HIRL Rwy 16-34	Knots	60	90	120	150	180
	Min:Sec	3:18	2:12	1:39	1:19	1:06