

ABILENE, TEXAS

TACAN W RWY 16

TACAN DYS Chan 63	APCH CRS 169°	Rwy Idg 13,499 TDZE 1790 Arprt Elev 1799
-----------------------------	-------------------------	---

[USAF]

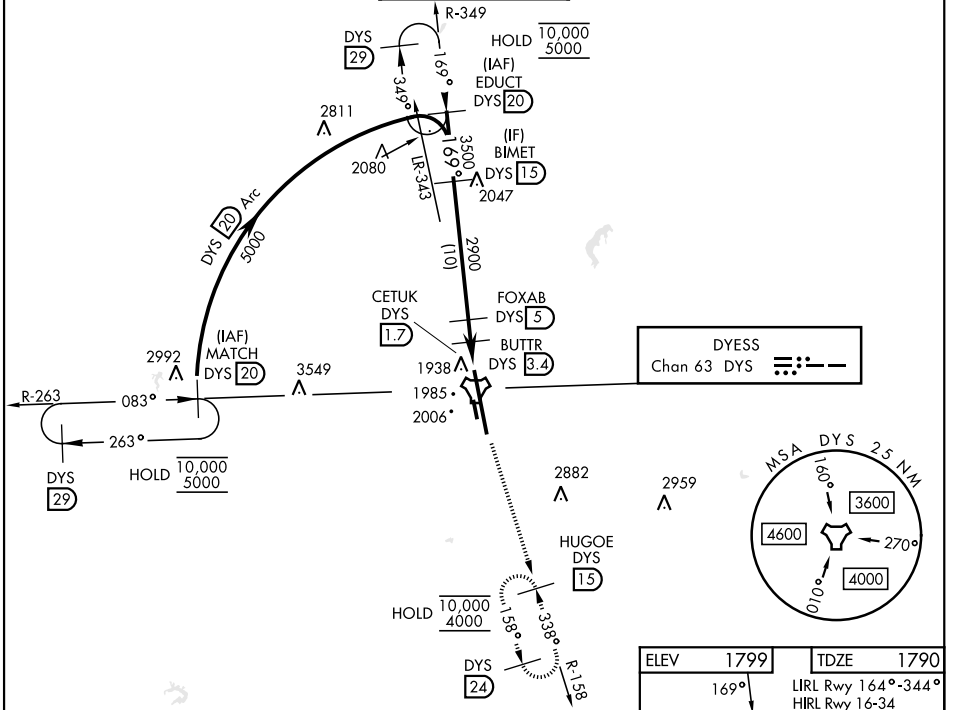
DYESS AFB (KDYS)

* When ALS inop, increase CAT AB RVR to 55 and vis to 1 mile, CAT CDE RVR to 60, vis to 1½ miles.
 ** Circling to other than RWY 34 not authorized.



MISSED APPROACH: Climb to 4000 via
 DYS TACAN R-158 to HUGOE and hold.

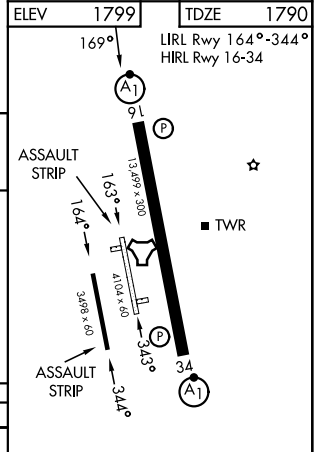
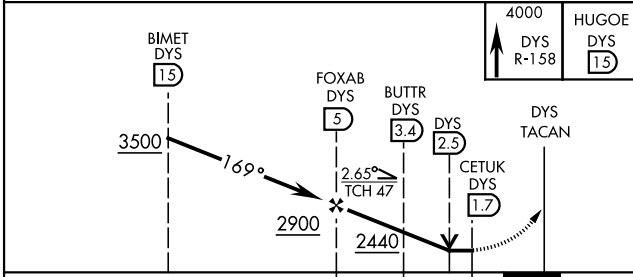
ATIS ★ 269.175	ABILENE APP CON 125.0 338.3 EAST 127.2 282.3 WEST	DYESS TOWER 133.0 257.675	GND CON 118.35 275.8	ASR
--------------------------	---	-------------------------------------	--------------------------------	-----



SC-2, 11 JUN 2026 to 09 JUL 2026

SC-2, 11 JUN 2026 to 09 JUL 2026

EMERG SAFE ALT 100 NM 4600



CATEGORY	A	B	C	D	E
S-16 *	2200/24	410 (500-½)	2200/40	410 (500-¾)	
CIRCLING **	2300-1 510 (600-1)	2320-1 530 (600-1)	2440-1¼ 650 (700-1¾)	2480-2¼ 690 (700-2¼)	2540-2¾ 750 (800-2¾)

FAF to MAP 3.3 NM					
Knots	60	90	120	150	180
Min:Sec	3:18	2:12	1:39	1:19	1:06

ABILENE, TEXAS

32°25'N-99°51'W

DYESS AFB (KDYS)

Amdt 4 02OCT25

TACAN W RWY 16