

ABILENE, TEXAS

TACAN W RWY 34

TACAN DYS Chan 63	APCH CRS 338°	Rwy Idg 13,499 TDZE 1788 Arprt Elev 1799
-----------------------------	-------------------------	---

[USAF]

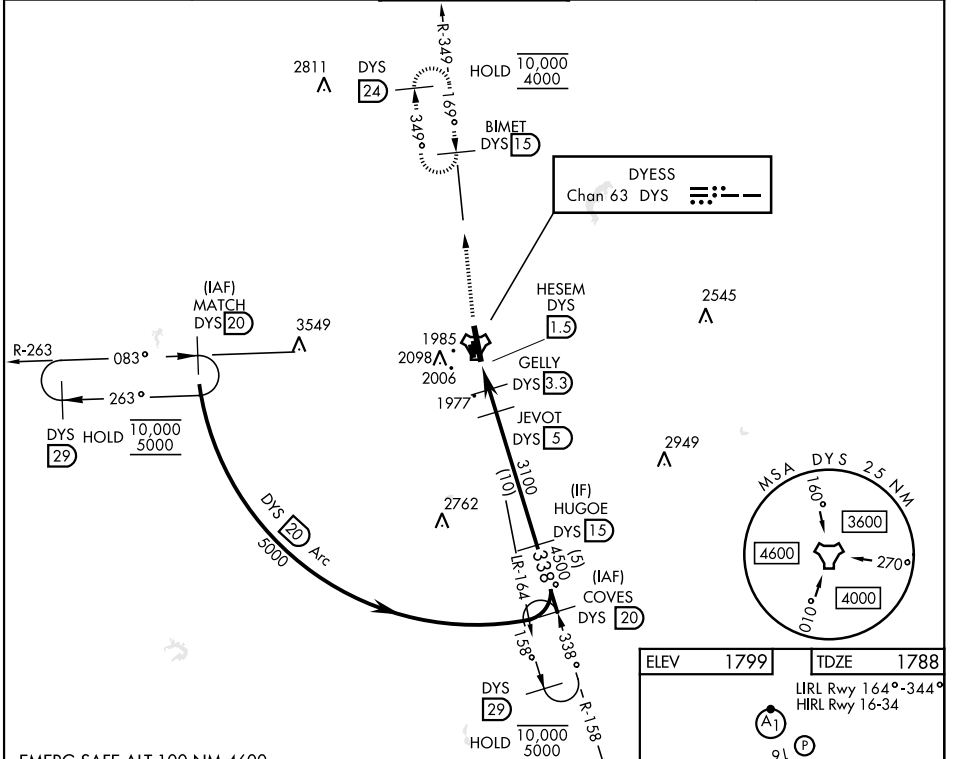
DYESS AFB (KDYS)

* When ALS inop, increase CAT AB RVR to 55, vis to 1 mile, CAT CDE vis to 1 1/2 miles.
 ** Circling to other than Rwy 16 not authorized.



MISSED APPROACH: Climb to 4000 via
 DYS TACAN R-349 to BIMET and hold.

ATIS ★ 269.175	ABILENE APP CON 125.0 338.3 EAST 127.2 282.3 WEST	DYESS TOWER 133.0 257.675	GND CON 118.35 275.8	ASR
--------------------------	---	-------------------------------------	--------------------------------	-----

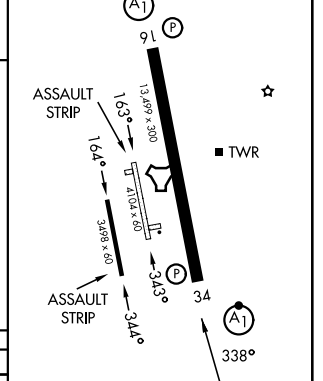


SC-2, 11 JUN 2026 to 09 JUL 2026

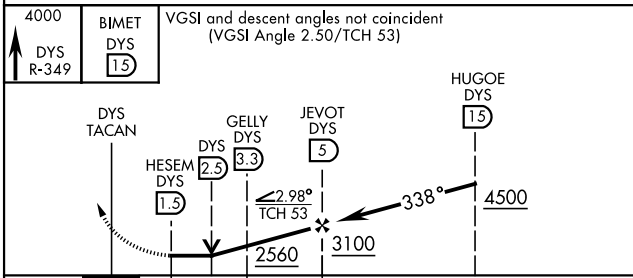
SC-2, 11 JUN 2026 to 09 JUL 2026

ELEV 1799	TDZE 1788
-----------	-----------

LIRL Rwy 164°-344°
 HIRL Rwy 16-34



EMERG SAFE ALT 100 NM 4600



CATEGORY	A	B	C	D	E
S-34 *	2240/24	452 (500-1/2)	2240/45	452 (500-7/8)	
CIRCLING **	2300-1 510 (600-1)	2320-1 530 (600-1)	2440-1 3/4 650 (700-1 3/4)	2480-2 1/4 690 (700-2 1/4)	2540-2 3/4 750 (800-2 3/4)

FAF to MAP 3.5 NM					
Knots	60	90	120	150	180
Min:Sec	3:30	2:20	1:45	1:24	1:10

ABILENE, TEXAS

32°25'N-99°51'W

DYESS AFB (KDYS)

Amdt 4 02OCT25

TACAN W RWY 34