

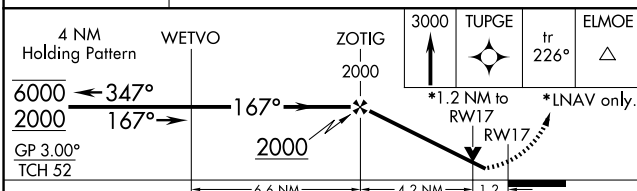
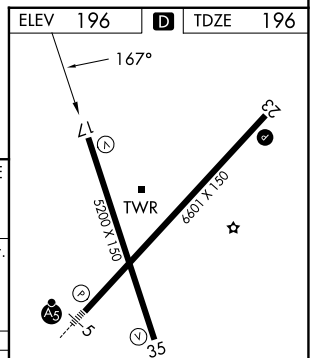
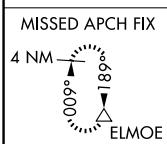
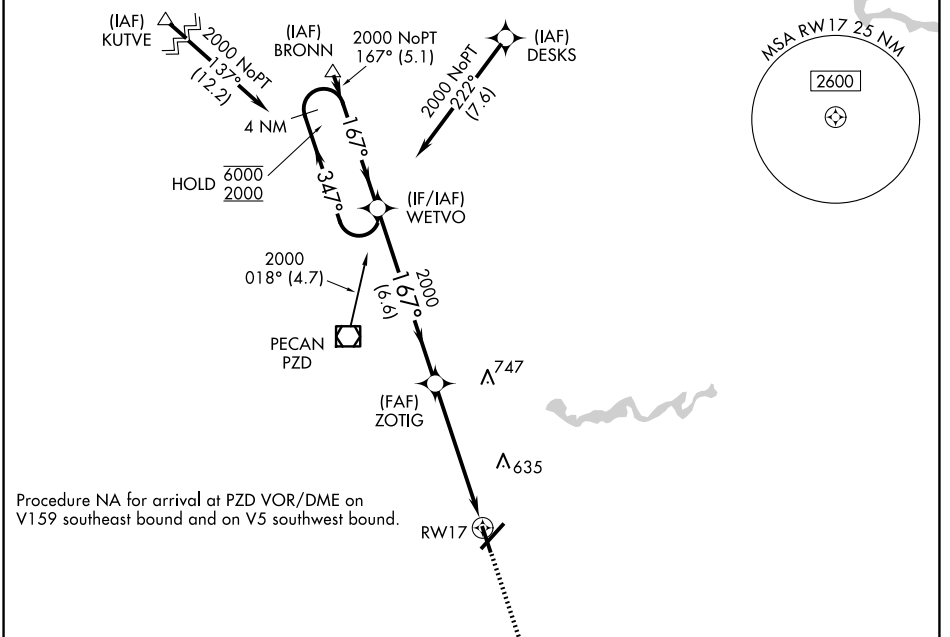
WAAS CH <b>48815</b> <b>W17A</b>	APP CRS <b>167°</b>	Rwy Ldg TDZE <b>196</b> Apt Elev <b>196</b>	<b>5200</b>
--	------------------------	---	-------------

# RNAV (GPS) RWY 17

SOUTHWEST GEORGIA RGNL (ABY)

RNP APCH.   
 ▼ Rwy 17 helicopter visibility reduction below 3/4 SM NA. For uncompensated Baro-VNAV systems, LNAV/VNAV NA below -7°C or above 54°C.   
 MISSED APPROACH: Climb to 3000 direct TUPGE and on track 226° to ELMOE and hold.

ATIS <b>133.05</b>	JACKSONVILLE CENTER <b>125.75 363.075</b>	ALBANY TOWER * <b>120.25 (CTAF) 0336.4</b>	GND CON <b>121.9 348.6</b>	UNICOM <b>122.95</b>
-----------------------	--	---	-------------------------------	-------------------------



CATEGORY	A	B	C	D
LPV DA		534-1 1/4	338 (400-1 1/4)	
LNAV/VNAV DA		603-1 1/2	407 (500-1 1/2)	
LNAV MDA	640-1	444 (500-1)	640-1 1/4 444 (500-1 1/4)	640-1 1/2 444 (500-1 1/2)
CIRCLING	640-1 444 (500-1)	660-1 464 (500-1)	940-2 1/4 744 (800-2 1/4)	940-2 1/2 744 (800-2 1/2)



SE-4, 11 JUN 2026 to 09 JUL 2026

SE-4, 11 JUN 2026 to 09 JUL 2026

HIRL Rwy 5-23  
MIRL Rwy 17-35  
REIL Rwy 35  
REIL Rwy 17 and 23