

WAAS CH 97415 W35A	APP CRS 347°	Rwy Ldg 5200 TDZE 196 Apt Elev 196
--	------------------------	---

RNAV (GPS) RWY 35

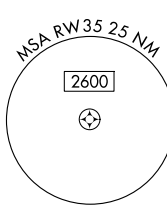
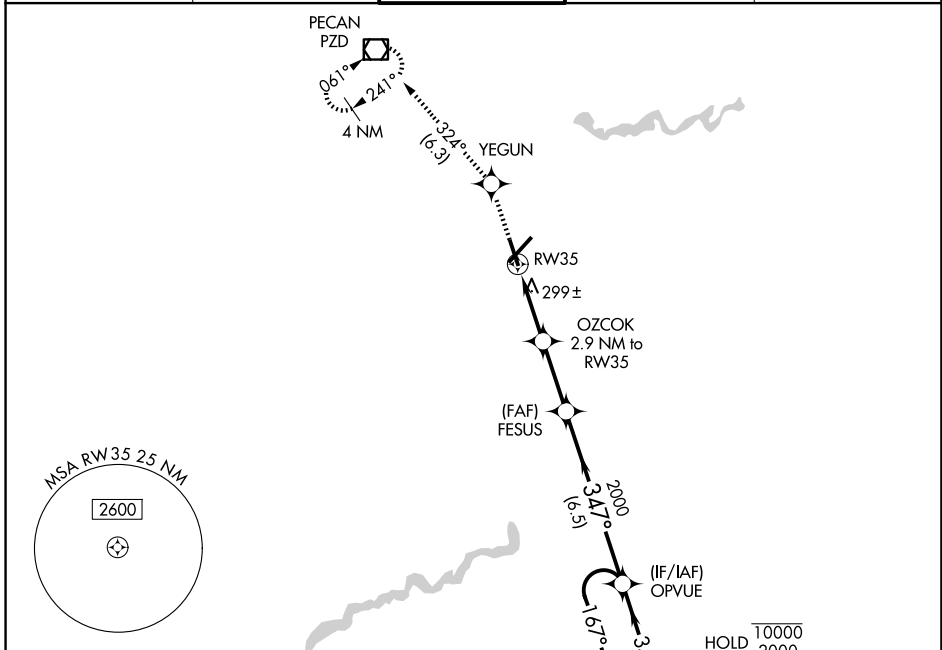
SOUTHWEST GEORGIA RGNL (ABY)

RNP APCH.

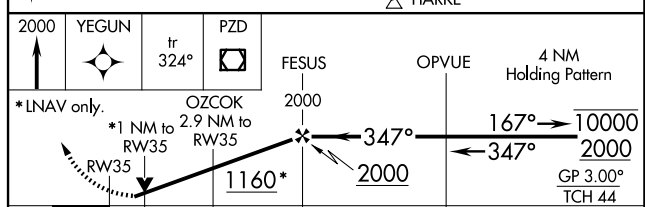
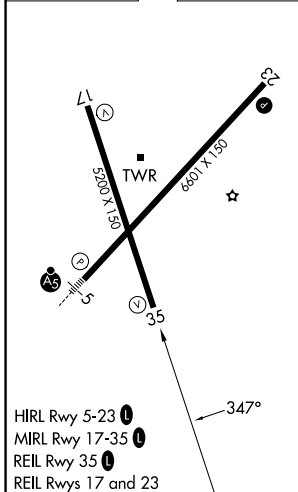
For uncompensated Baro-VNAV systems, LNAV/VNAV NA below -7°C or above 54°C. Rwy 35 helicopter visibility reduction below 3/4 SM NA.

MISSED APPROACH: Climb to 2000 direct YEGUN and on track 324° to PZD VOR/DME and hold.

ATIS 133.05	JACKSONVILLE CENTER 125.75 363.075	ALBANY TOWER * 120.25 (CTAF) 0336.4	GND CON 121.9 348.6	UNICOM 122.95
-----------------------	--	---	-------------------------------	-------------------------



ELEV 196	D	TDZE 196
----------	----------	----------



2000	YEGUN	tr 324°	PZD	FESUS	OPVUE	4 NM Holding Pattern
*LNAV only.		OZCOK 2000		2000		
*1 NM to RW35		*1.9 NM to RW35		2.6 NM		
1 NM		1.9 NM		2.6 NM		
CATEGORY		A		B		C
LPV	DA	495-1		299 (300-1)		
LNAV/VNAV	DA	475-1		279 (300-1)		
LNAV	MDA	560-1		364 (400-1)		
CIRCLING		640-1	660-1	940-2 1/4	940-2 1/2	
		444 (500-1)	464 (500-1)	744 (800-2/4)	744 (800-2/2)	

SE-4, 11 JUN 2026 to 09 JUL 2026

SE-4, 11 JUN 2026 to 09 JUL 2026