

WAAS CH 50110 W32A	APP CRS 321°	Rwy Ldg 9352 TDZE 89 Apt Elev 89
----------------------------------------	------------------------	-------------------------------------------------------------

RNAV (GPS) RWY 32

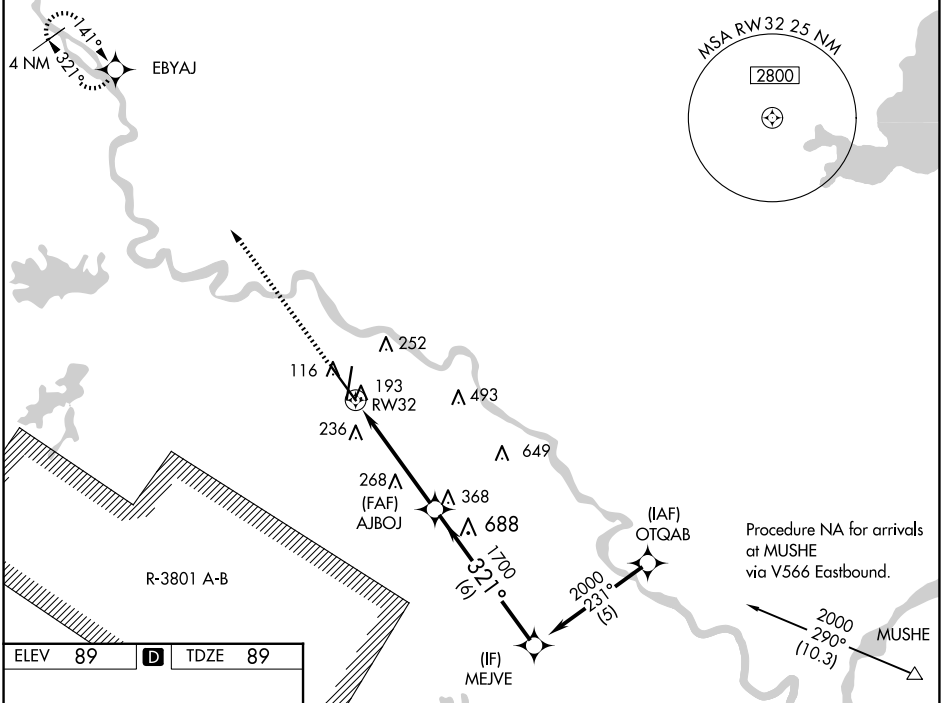
ALEXANDRIA INTL (AEX)

RNP APCH-GPS.

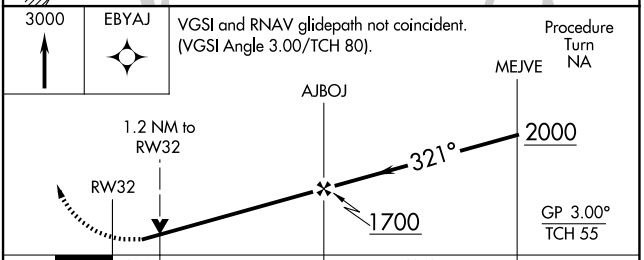
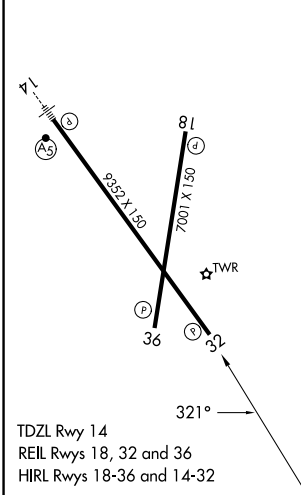
▼ Rwy 32 helicopter visibility reduction below 3/4 SM NA. Baro-VNAV NA below -15°C.
▲ When R-3801A-B active, RADAR required.

MISSED APPROACH: Climb to 3000
direct EBYAJ WP and hold.

ASOS 123.975	POLK APP CON 125.4 254.8	ALEXANDRIA TOWER 127.35 (CTAF) 269.2	GND CON 121.9 372.0	CLNC DEL 121.9
------------------------	------------------------------------	------------------------------------------------	-------------------------------	--------------------------



ELEV 89	D	TDZE 89
----------------	----------	----------------



CATEGORY	A	B	C	D
LPV DA		340/50	251 (300-1)	
LNAV/VNAV DA		460/60	371 (400-1¼)	
LNAV MDA	520/55	431 (500-1)	520-1¼ 431 (500-1¼)	520-1½ 431 (500-1½)
CIRCLING	540-1 451 (500-1)	560-1 471 (500-1)	700-1¾ 611 (700-1¾)	860-2½ 771 (800-2½)

SC-4, 11 JUN 2026 to 09 JUL 2026

SC-4, 11 JUN 2026 to 09 JUL 2026