

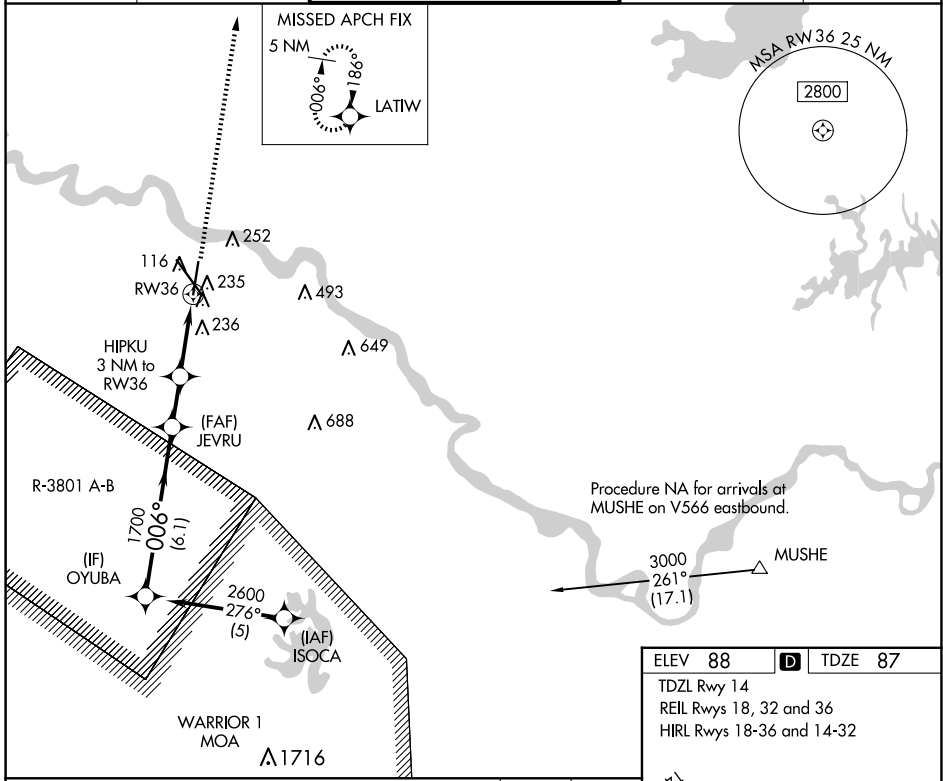
APP CRS	Rwy Ldg	7001
006°	TDZE	87
	Apt Elev	88

RNAV (GPS) RWY 36

ALEXANDRIA INTL (AEX)

RNP APCH - GPS.		MISSED APPROACH: Climb to 2600 direct LATIW and hold.
<p>▼ Rwy 36 helicopter visibility reduction below 3/4 SM NA. ▲ Procedure NA when R-3801 A-B in use.</p>		

ASOS 123.975	POLK APP CON 125.4 254.8	ALEXANDRIA TOWER 127.35 (CTAF) 269.2	GND CON 121.9 372.0	CLNC DEL 121.9
------------------------	------------------------------------	--	-------------------------------	--------------------------



SC-4, 11 JUN 2026 to 09 JUL 2026

ELEV 88	D	TDZE 87
TDZL Rwy 14		
REIL Rwy 18, 32 and 36		
HIRL Rwy 18-36 and 14-32		

