

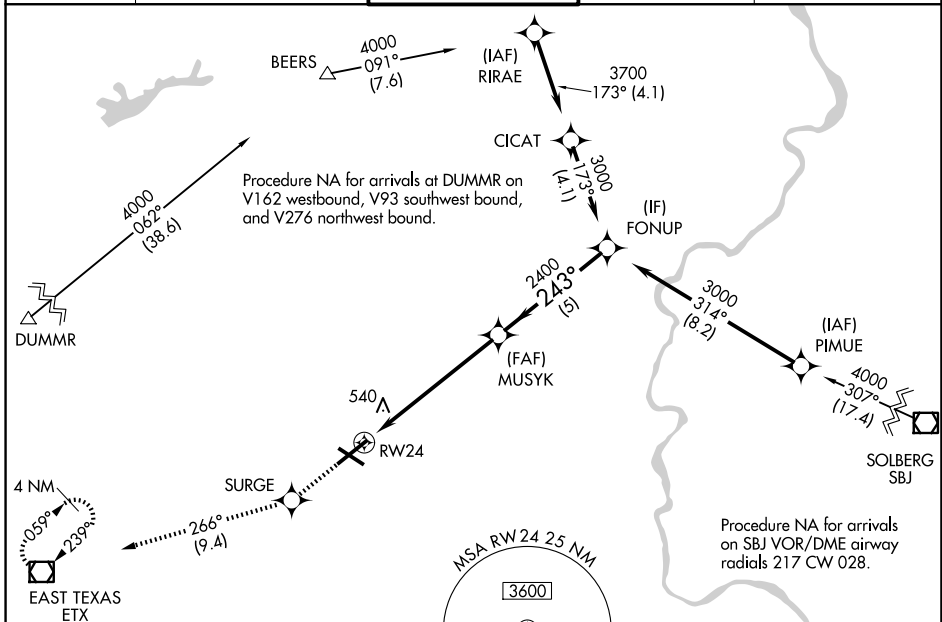
WAAS CH 40332 W24A	APP CRS 243°	Rwy Ldg 7089 TDZE 387 Apt Elev 394
--	------------------------	---

RNAV (GPS) RWY 24

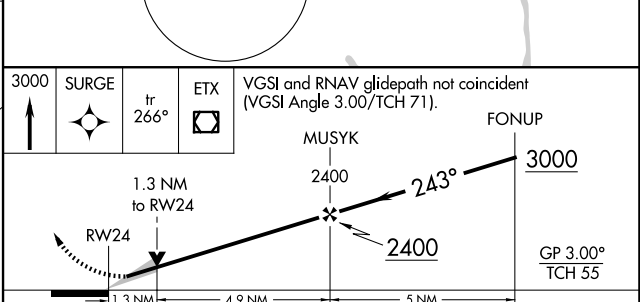
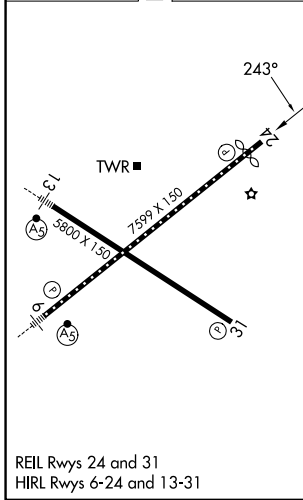
LEHIGH VALLEY INTL (ABE)

RNP APCH - GPS.		MISSED APPROACH: Climb to 3000 direct SURGE and on track 266° to ETX VOR/DME and hold.	
<p>▼ For uncompensated Baro-VNAV systems, LNAV/VNAV ▲ NA below -8°C or above 54°C.</p>			

ATIS 126.975	ALLENTOWN APP CON 119.65 124.45 351.8	ALLENTOWN TOWER 120.5 257.95	GND CON 121.9 257.95	CLNC DEL 124.05 257.95
------------------------	---	--	--------------------------------	----------------------------------



ELEV 394	D	TDZE 387
----------	----------	----------



CATEGORY	A	B	C	D
LPV DA		587/40	200 (200-¾)	
LNAV/VNAV DA		783-1¼	396 (400-1¼)	
LNAV MDA	860/55	473 (500-1)	860-1¾	473 (500-1¾)
CIRCLING	900-1	506 (600-1)	1180-2¼ 786 (800-2¼)	1600-3 1206 (1300-3)

NE-4, 11 JUN 2026 to 09 JUL 2026

NE-4, 11 JUN 2026 to 09 JUL 2026