

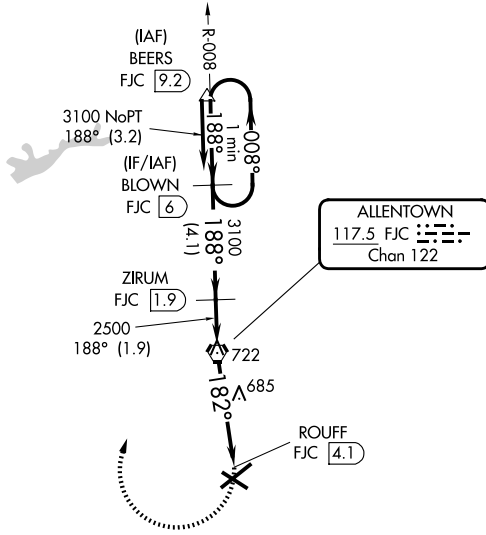
VORTAC FJC 117.5 Chan 122	APP CRS 182°	Rwy Ldg TDZE Apt Elev	N/A N/A 394
---	------------------------	-----------------------------	--

TACAN-C

LEHIGH VALLEY INTL (ABE)

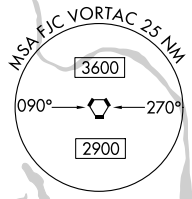
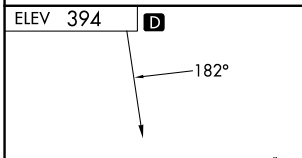
▽ ▲ NA	MISSED APPROACH: Climbing right turn to 3100 direct FJC VORTAC then via FJC R-008 to BLOWN/6 DME and hold.
-------------------------	--

ATIS 126.975	ALLENTOWN APP CON 119.65 124.45 351.8	ALLENTOWN TOWER 120.5 257.95	GND CON 121.9 257.95	CLNC DEL 124.05 257.95
------------------------	---	--	--------------------------------	----------------------------------

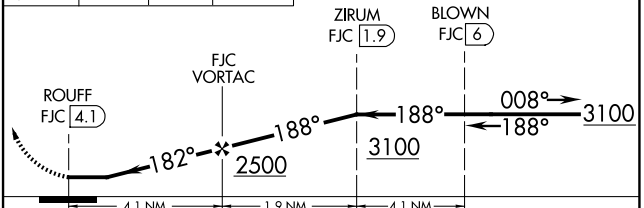


NE-4, 11 JUN 2026 to 09 JUL 2026

NE-4, 11 JUN 2026 to 09 JUL 2026



3100	FJC	FJC R-008	BLOWN FJC [6]	One Minute Holding Pattern
------	-----	-----------	---------------	----------------------------



REIL Rwys 24 and 31
HIRL Rwys 6-24 and 13-31

CATEGORY	A	B	C	D
CIRCLING	940-1	546 (600-1)	1180-2¼ 786 (800-2¼)	1600-3 1206 (1300-3)