

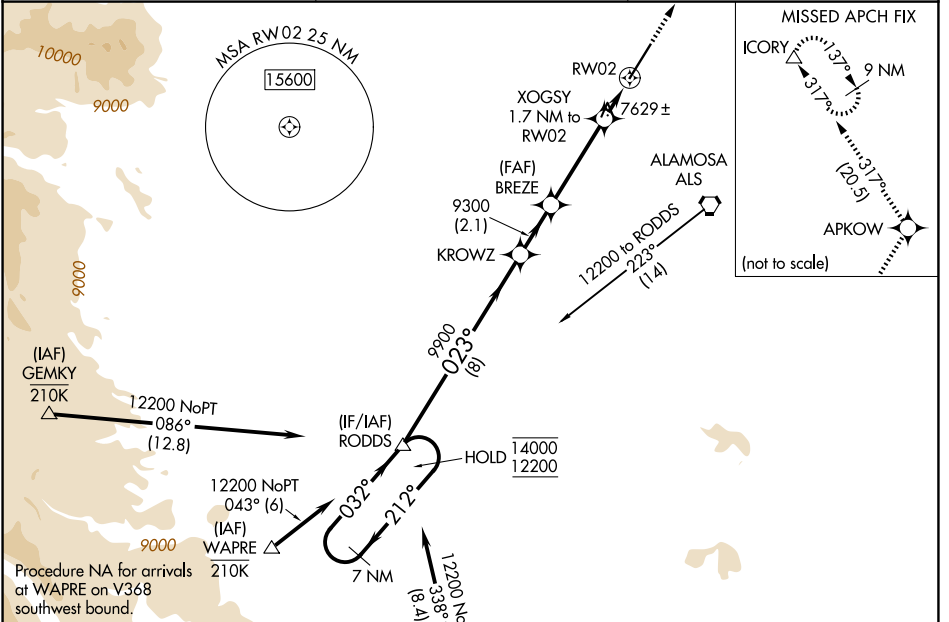
WAAS CH 90410 W02A	APP CRS 023°	Rwy Ldg TDZE 7540 Apt Elev 7540
--	------------------------	---

RNAV (GPS) RWY 2

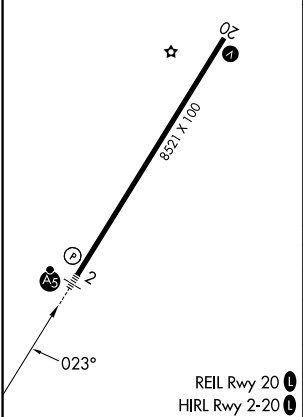
SAN LUIS VALLEY RGNL/BERGMAN FLD (ALS)

RNP APCH-GPS. ▼ For uncompensated Baro-VNAV systems, LNAV/VNAV NA below -31°C or above 54°C. For inop ALS, increase LNAV/VNAV all Cats visibility to ¾ SM. ⚠ -25°C	MALSR AS	MISSED APPROACH: Climb to 14600 direct APKOW and on track 317° to ICORY and hold, continue climb-in-hold to 14600.
--	-------------	--

ASOS 135.175	DENVER CENTER 128.375 379.95	UNICOM 122.8 (CTAF) 0
------------------------	--	---------------------------------



ELEV 7540	D	TDZE 7540
-----------	----------	-----------



	7 NM Holding Pattern	RODDS	KROWZ	BREZE	14600	APKOW	tr 317°	ICORY
	14000 ← 212°	12200 → 032°	023°	9300	XOGSY 1.7 NM to RW02	0.9 NM to RW02		
	GP 3.00° TCH 48	8 NM	2.1 NM	3.6 NM	0.8 NM	0.9 NM		
CATEGORY	A	B	C	D				
LPV DA		7740-½	200 (200-½)					
LNAV/VNAV DA		7790-½	250 (300-½)					
LNAV MDA		7880-½	340 (400-½)					
CIRCLING	8040-1	500 (500-1)	8080-1½ 540 (600-1½)	8100-2 560 (600-2)				

SW-1, 11 JUN 2026 to 09 JUL 2026

SW-1, 11 JUN 2026 to 09 JUL 2026