

VORTAC ALS 113.9 Chan 86	APP CRS 142°	Rwy Ldg TDZE Apt Elev 7540	N/A N/A 7540
--	------------------------	--	---

VOR-B

SAN LUIS VALLEY RGNL/BERGMAN FLD (ALS)

DME required. RADAR required for arrivals at TUYPI.

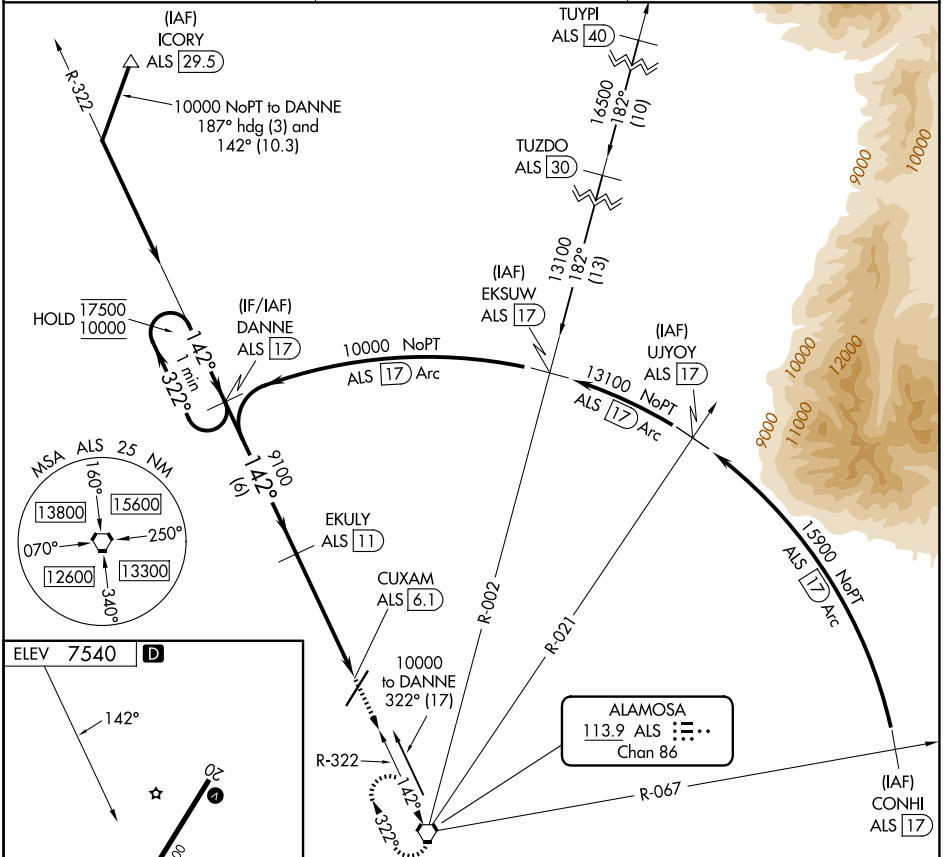
MISSED APPROACH: Climb to 11000 direct ALS VORTAC and hold, continue climb-in-hold to 11000.

▽
❄️ -25°C

ASOS
135.175

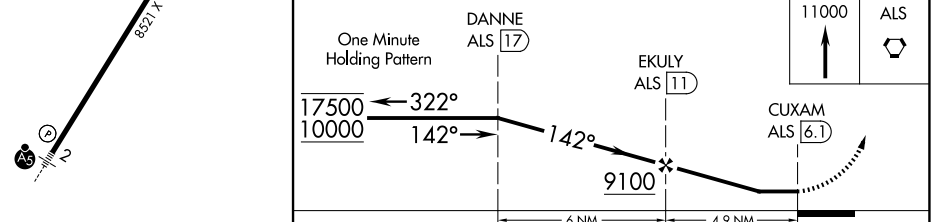
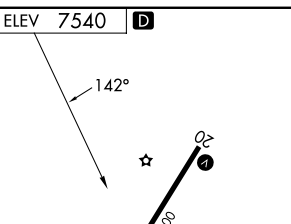
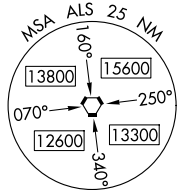
DENVER CENTER
128.375 379.95

UNICOM
122.8 (CTAF) 0



SW-1, 11 JUN 2026 to 09 JUL 2026

SW-1, 11 JUN 2026 to 09 JUL 2026



REIL Rwy 20 0	HIRL Rwy 2-20 0			
CATEGORY	A	B	C	D
CIRCLING	8040-1	500 (500-1)	8080-1½ 540 (600-1½)	8100-2 560 (600-2)