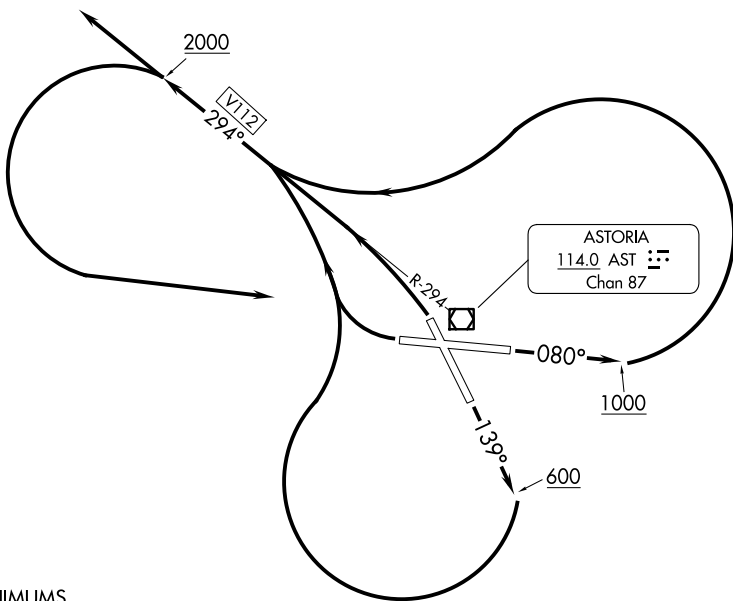


ASTORIA THREE DEPARTURE (OBSTACLE)

SEATTLE CENTER
124.2 317.6



TAKEOFF MINIMUMS

Rwy 32: Standard.

Rwy 8: Standard with a minimum climb of 218' per NM to 800, or 2300-3 for climb in visual conditions.

Rwy 14: 600-3 with a minimum climb gradient of 239' per NM to 800, or standard with a minimum climb of 285' per NM to 600 or 2300-3 for climb in visual conditions.

Rwy 26: 300-1¼ or standard with a minimum climb of 234' per NM to 300 or alternatively, with standard takeoff minimums and a normal 200' per NM climb gradient, takeoff must occur no later than 1800' prior to DER or 2300-3 for climb in visual conditions.

(CONTINUED ON FOLLOWING PAGE)

NOTE: Chart not to scale.

DEPARTURE ROUTE DESCRIPTION

TAKEOFF RUNWAY 8: Climb heading 080° to 1000 then climbing left turn, thence

TAKEOFF RUNWAY 14: Climb heading 139° to 600 then climbing right turn, thence

TAKEOFF RUNWAY 26: Climbing right turn, thence

TAKEOFF RUNWAY 32: Climbing left turn, thence

. . . . intercept the AST VOR/DME R-294 westbound, aircraft northwest bound intercept V112 and continue climb on course. All other aircraft climb to 2000 or above then turn left direct AST VOR/DME and continue climbing on course.

VCOA RUNWAYS 8, 14, 26: Obtain ATC approval for VCOA when requesting IFR clearance. Climb in visual conditions to cross Astoria Rgnl airport at or above 2300 before proceeding on course.

NW-1, 11 JUN 2026 to 09 JUL 2026

NW-1, 11 JUN 2026 to 09 JUL 2026