

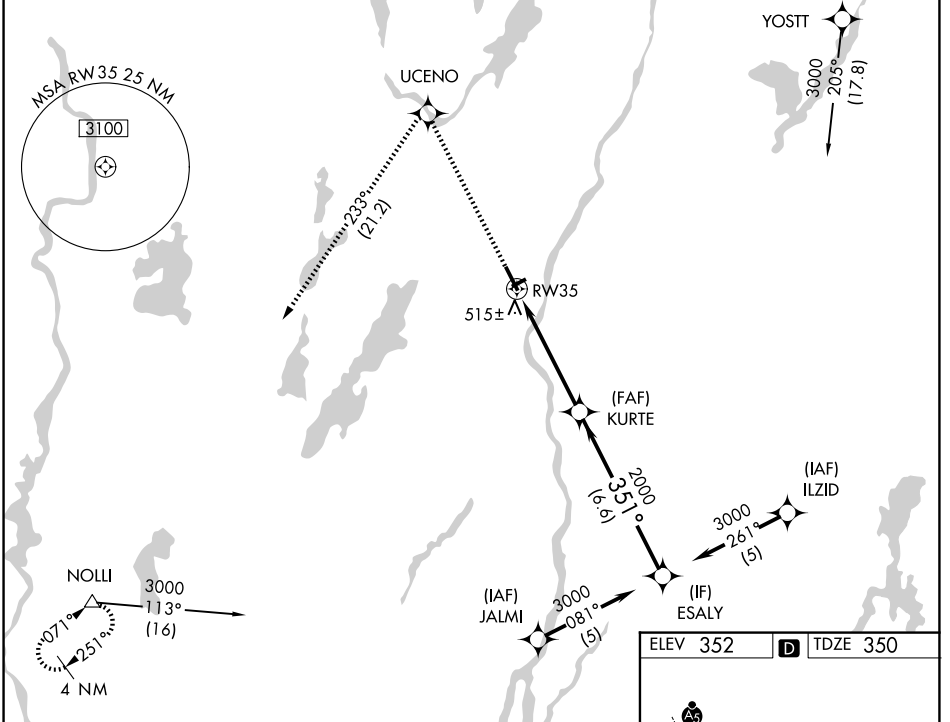
WAAS CH 70406 W35A	APP CRS 351°	Rwy Ldg TDZE Apt Elev	5002 350 352
--	------------------------	-----------------------------	---

RNAV (GPS) RWY 35

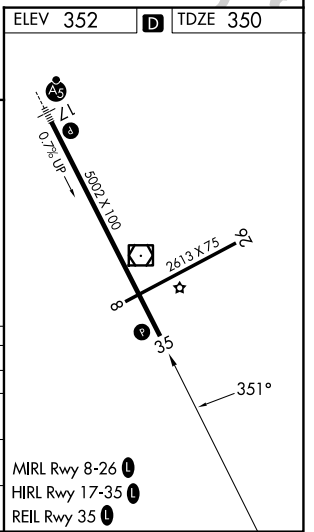
AUGUSTA STATE (AUG)

RNP APCH. Circling to Rwy 26 NA at night. Rwy 35 helicopter visibility reduction below 3/4 SM NA. For uncompensated Baro-VNAV systems, LNAV/VNAV NA below -15°C or above 54°C.	MISSED APPROACH: Climb to 3000 direct UCENO and left turn on track 233° to NOLLI and hold.
---	--

ASOS 118.325	PORTLAND APP CON * 128.35 299.2	CLNC DEL 119.95 299.2	UNICOM 123.0 (CTAF) 0
------------------------	---	---------------------------------	---------------------------------



3000 UCENO Ir 233° NOLLI 	VGSi and RNAV glidepath not coincident (VGSi Angle 3.00/TCH 40).			
* LNAV only.				
* 1.4 NM to RW35				
RW35				
KURTE				
ESALY				
GP 3.00° TCH 55				
1.4 3.6 NM 6.6 NM				
CATEGORY	A	B	C	D
LPV DA	610-1 260 (300-1)			
LNAV/VNAV DA	850-1 3/4 500 (500-1 3/4)			
LNAV MDA	840-1 490 (500-1)	840-1 3/4 490 (500-1 3/4)		840-1 1/2 490 (500-1 1/2)
CIRCLING	880-1 3/4 528 (600-1 3/4)	980-1 3/4 628 (700-1 3/4)	1160-2 1/2 808 (900-2 1/2)	



NE-1, 11 JUN 2026 to 09 JUL 2026

NE-1, 11 JUN 2026 to 09 JUL 2026

- MIRL Rwy 8-26
- HIRL Rwy 17-35
- REIL Rwy 35