

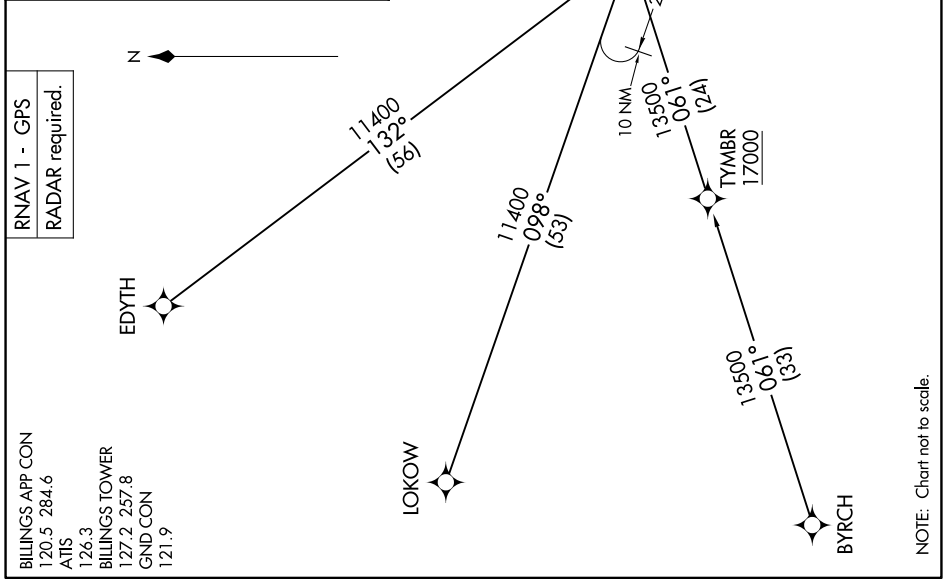
9200 Tm 60 of 2026 09 JUL 2026 11:11-WN

ARRIVAL ROUTE DESCRIPTION

BYRCH TRANSITION (BYRCH.CRAZI4)
EDYTH TRANSITION (EDYTH.CRAZI4)
LOKOW TRANSITION (LOKOW.CRAZI4)

LANDING RUNWAY 10L: From CRAZI on track 105° to cross LRSUN at 8000 and at 230K. Expect assigned approach or RADAR vectors to final approach course.

LANDING RUNWAY 28R: From CRAZI on track 098° to cross BBCAT at 8000 and at 210K, then on heading 102° or as assigned by ATC. Expect assigned approach or RADAR vectors to final approach course.



NOTE: Chart not to scale.

NW-1, 11 JUN 2026 to 09 JUL 2026