

LOC/DME I-BMO 111.5 Chan 52	APP CRS 282°	Rwy Ldg TDZE 10518 3517 Apt Elev 3662
---	------------------------	--

ILS or LOC RWY 28R

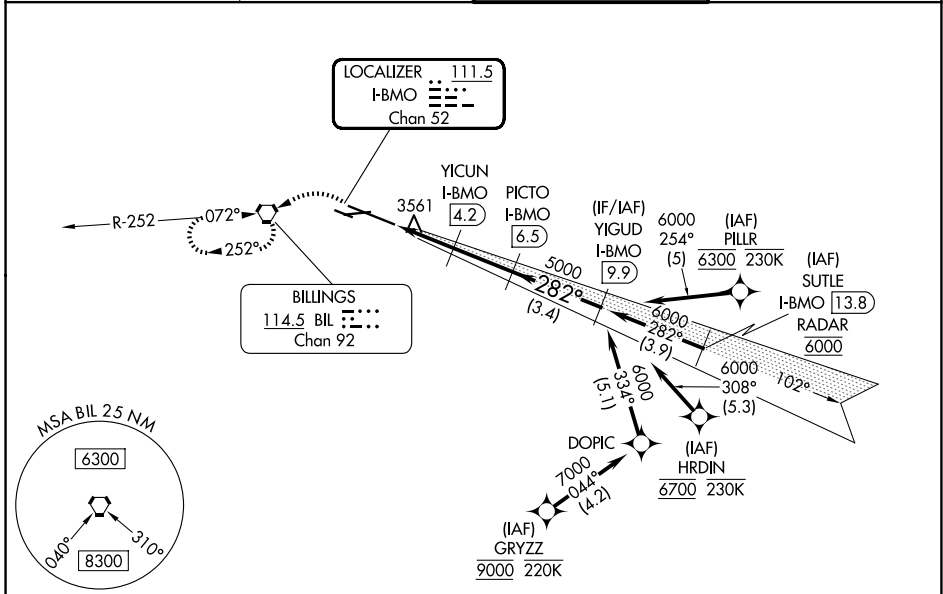
BILLINGS LOGAN INTL (BIL)

DME required.
Aircraft not GPS equipped - RADAR required for procedure entry.
RNP APCH-GPS. from GRYZZ or HRDIN or PILLR.

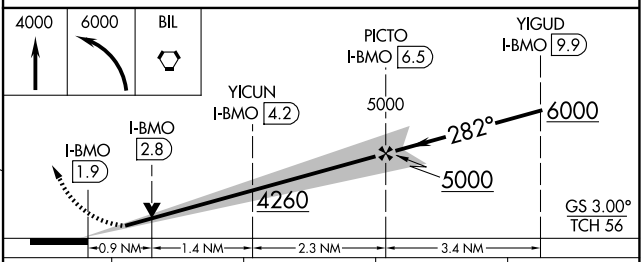
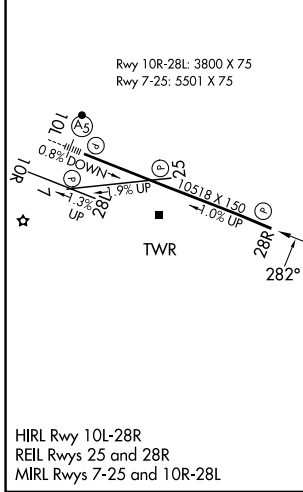
⚠ Rwy 28R helicopter visibility reduction below 3/4 SM NA.

MISSED APPROACH: Climb to 4000 then climbing left turn to 6000 direct BIL VORTAC and hold, continue climb-in-hold to 6000.

ATIS 126.3	BILLINGS APP CON 120.5 284.6	BILLINGS TOWER 127.2 257.8	GND CON 121.9
----------------------	--	--------------------------------------	-------------------------



ELEV 3662	D	TDZE 3517
-----------	----------	-----------



CATEGORY	A	B	C	D
S-ILS 28R	3767-3/4		250 (200-3/4)	
S-LOC 28R	3840-1		323 (200-1)	
CIRCLING	4160-1	498 (500-1)	4180-1 1/2 518 (600-1 1/2)	4580-3 918 (1000-3)

NW-1, 11 JUN 2026 to 09 JUL 2026

NW-1, 11 JUN 2026 to 09 JUL 2026