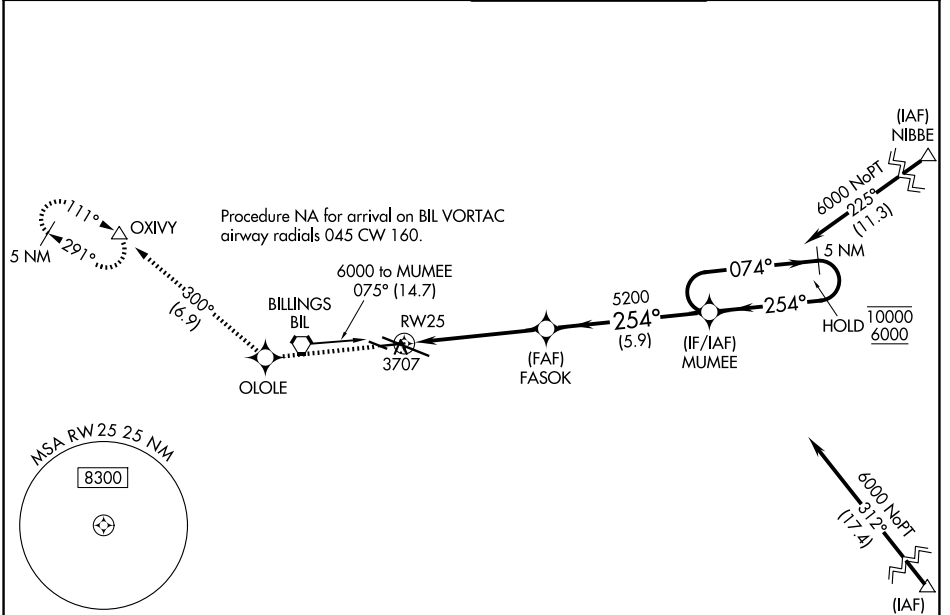


WAAS CH <b>78028</b> <b>W25A</b>	APP CRS <b>254°</b>	Rwy Ldg TDZE Apt Elev	<b>5501</b> <b>3586</b> <b>3662</b>
--	------------------------	-----------------------------	---

# RNAV (GPS) RWY 25

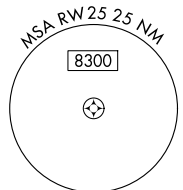
BILLINGS LOGAN INTL (BIL)

RNP APCH - GPS.		MISSED APPROACH: Climb to 6000 direct OLOLE and on track 300° to OXIVY and hold.	
<p>⚠ For uncompensated Baro-VNAV systems, LNAV/VNAV NA below -25°C or above 54°C.</p>			
ATIS <b>126.3</b>	BILLINGS APP CON <b>120.5 284.6</b>	BILLINGS TOWER <b>127.2 257.8</b>	GND CON <b>121.9</b>

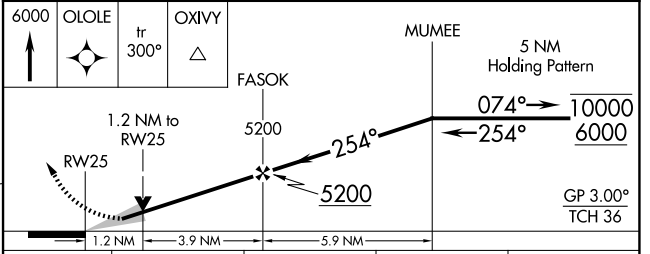
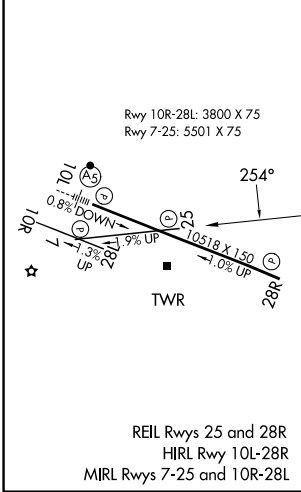


NW-1, 11 JUN 2026 to 09 JUL 2026

NW-1, 11 JUN 2026 to 09 JUL 2026



ELEV 3662	<b>D</b>	TDZE 3586
-----------	----------	-----------



CATEGORY	A	B	C	D
LPV DA		3836- <sup>3</sup> / <sub>4</sub>	250 (200- <sup>3</sup> / <sub>4</sub> )	
LNAV/VNAV DA		3920-1	334 (300-1)	
LNAV MDA		3960-1	374 (300-1)	
CIRCLING	4160-1	498 (500-1)	4180-1 <sup>1</sup> / <sub>2</sub> 518 (600-1 <sup>1</sup> / <sub>2</sub> )	4580-3 918 (1000-3)