

APP CRS	Rwy Ldg	<b>10518</b>
<b>282°</b>	TDZE	<b>3517</b>
	Apt Elev	<b>3662</b>

# RNAV (RNP) Z RWY 28R

BILLINGS LOGAN INTL (BIL)

RNP AR APCH-GPS

▼ For uncompensated Baro-VNAV systems, procedure NA below -24°C or above 50°C.

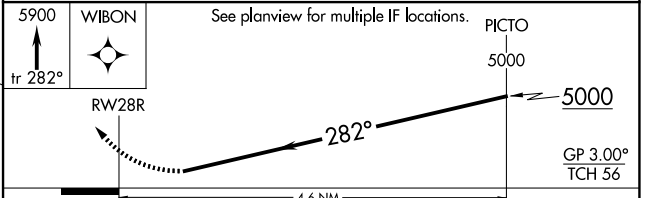
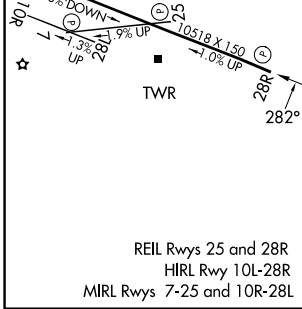
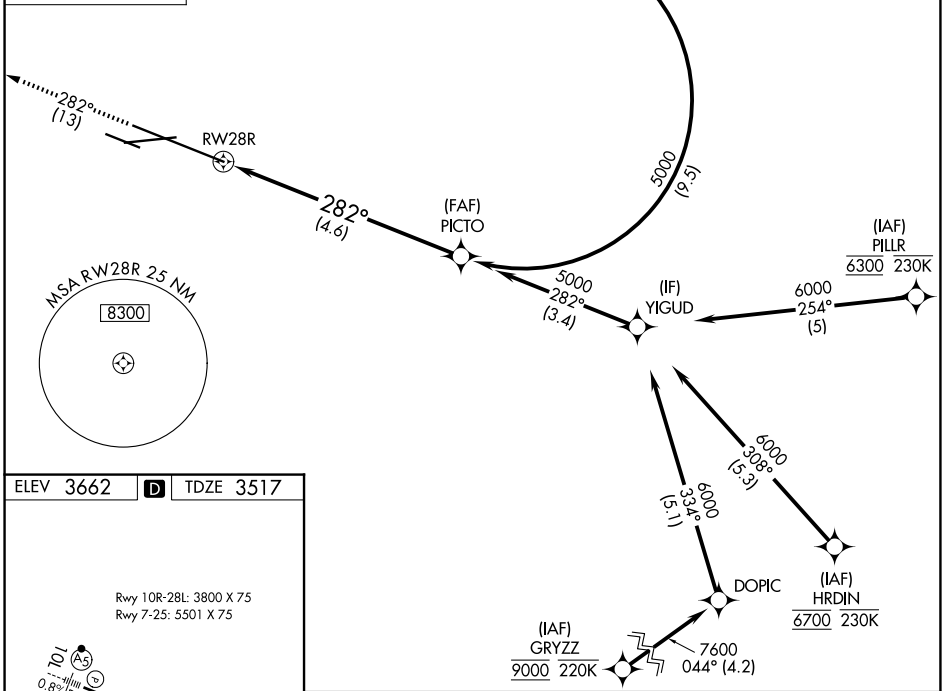
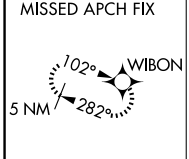
MISSED APPROACH: Climb to 5900 on track 282° to WIBON and hold.

ATIS  
**126.3**

BILLINGS APP CON  
**120.5 284.6**

BILLINGS TOWER  
**127.2 257.8**

GND CON  
**121.9**



CATEGORY	A	B	C	D
RNP 0.30 DA	3903-1¼		386 (300-1¼)	

**AUTHORIZATION REQUIRED**

NW-1, 11 JUN 2026 to 09 JUL 2026

NW-1, 11 JUN 2026 to 09 JUL 2026