

VORTAC BIL <b>114.5</b> Chan 92	APP CRS <b>262°</b>	Rwy Ldg <b>10518</b> TDZE <b>3517</b> Apt Elev <b>3662</b>
---------------------------------------	------------------------	------------------------------------------------------------------

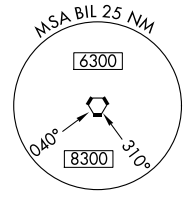
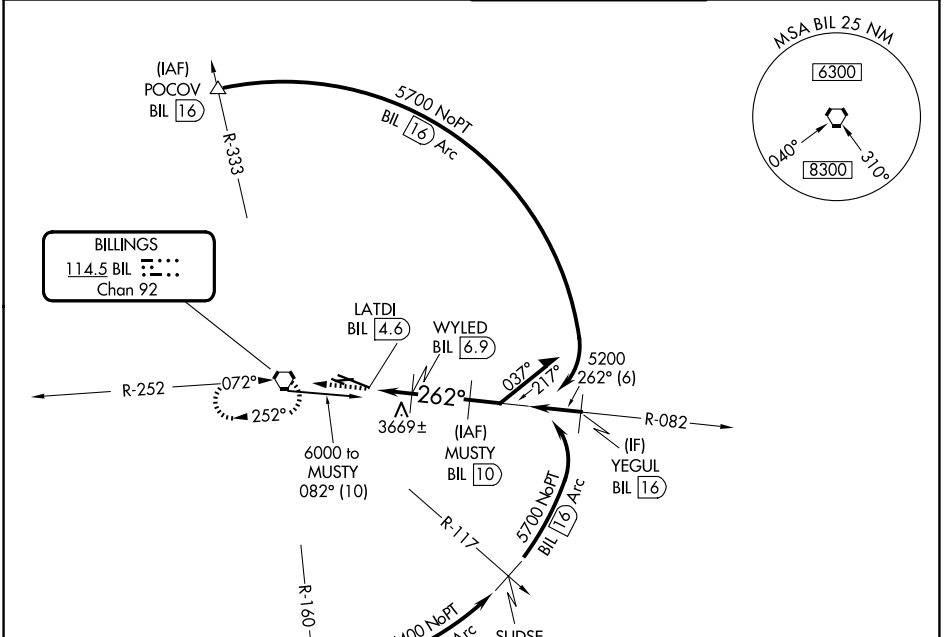
# VOR/DME RWY 28R

BILLINGS LOGAN INTL (BIL)

Helicopter visibility reduction below 3/4 SM NA.

MISSED APPROACH: Climb to 6000 direct BIL VORTAC and hold, continue climb-in-hold to 6000.

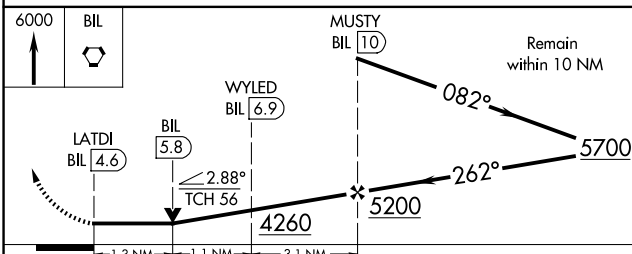
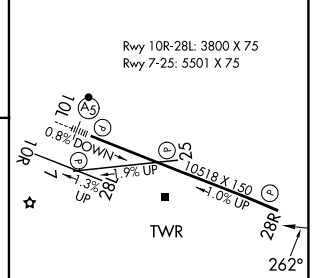
ATIS <b>126.3</b>	BILLINGS APP CON <b>120.5 284.6</b>	BILLINGS TOWER <b>127.2 257.8</b>	GND CON <b>121.9</b>
----------------------	----------------------------------------	--------------------------------------	-------------------------



NW-1, 11 JUN 2026 to 09 JUL 2026

NW-1, 11 JUN 2026 to 09 JUL 2026

ELEV 3662	D	TDZE 3517
-----------	---	-----------



CATEGORY	A	B	C	D
S-28R	3940-1	423 (300-1)	3940-1 <sup>3</sup> / <sub>8</sub>	423 (300-1 <sup>3</sup> / <sub>8</sub> )
CIRCLING	4160-1 498 (500-1)	4180-1 518 (600-1)	4180-1 <sup>1</sup> / <sub>2</sub> 518 (600-1 <sup>1</sup> / <sub>2</sub> )	4580-3 918 (1000-3)

REIL Rwy 25 and 28R  
HIRL Rwy 10L-28R  
MIRL Rwy 7-25 and 10R-28L