

BILOXI, MISSISSIPPI

ILS or LOC RWY 22

LOC I-BIX 109.7	APCH CRS 217°	Rwy ldg THRE Arprt Elev 6630 17 33
---------------------------	-------------------------	--

[USAF]

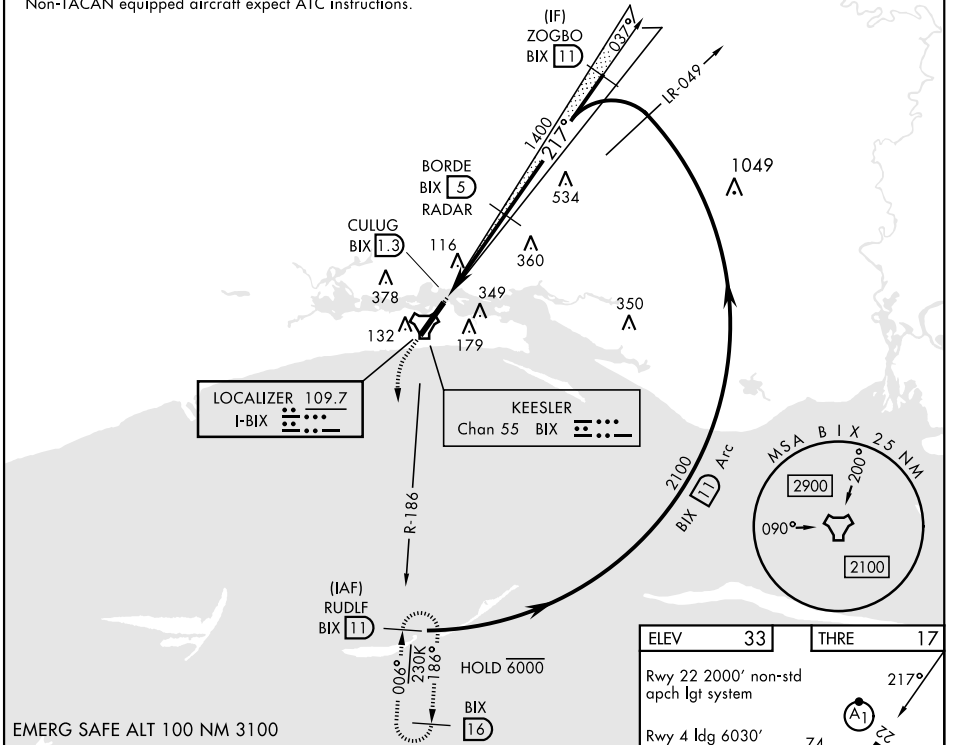
KEESLER AFB (KBIX)

RADAR or DME required	ALSF-1 	† MISSED APPROACH: Climb to 800 tracking 217°, upon reaching 800 turn left to intercept BIX TACAN R-186 climbing to 2200 to 11 DME (RUDLF) and hold.
-----------------------	------------	--

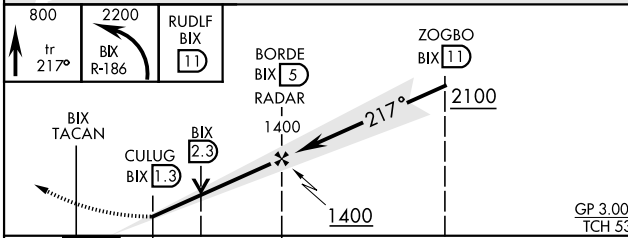
ATIS ★ 281.55	GULFPORT APP CON ★ 124.6 354.1 (130°- 309°) 127.5 254.25 (310°- 129°)	TOWER ★ 120.75 269.075	GND CON ★ 121.8 275.8	CLNC DEL 121.8 275.8
-------------------------	---	----------------------------------	---------------------------------	--------------------------------

• 272

† Missed approach requires use of RNAV or ATC RADAR monitoring.
Non-TACAN equipped aircraft expect ATC instructions.



EMERG SAFE ALT 100 NM 3100



ELEV	33	THRE	17		
Rwy 22 2000' non-std apch lgt system					
Rwy 4 ldg 6030'					
Rwy 22 ldg 6630'					
HIRL Rwy 4-22					
REIL Rwy 4					
175	74	45	68		
195	74	150	195		
195	195	195	195		
GP 3.00° TCH 53					
FAF to MAP 3.7 NM					
Knots	60	90	120	150	180
Min:Sec	3:42	2:28	1:51	1:29	1:14

CATEGORY	A	B	C	D
S-ILS 22	217/40		200	(200-¾)
S-LOC 22*	540/40	523 (600-¾)	540-1¼	523 (600-1¼)
CIRCLING	580-1	660-1	680-1¾	680-2
	547 (600-1)	627 (700-1)	647 (700-1¾)	647 (700-2)

BILOXI, MISSISSIPPI

30° 25' N-88° 55' W

KEESLER AFB (KBIX)

Amtd 2 03NOV22

ILS or LOC RWY 22

SC-4, 11 JUN 2026 to 09 JUL 2026

SC-4, 11 JUN 2026 to 09 JUL 2026