

BILOXI, MISSISSIPPI

# RNAV (GPS) RWY 4

APCH CRS	Rwy Idg	6030
037°	TDZE	23
	Arprt Elev	33

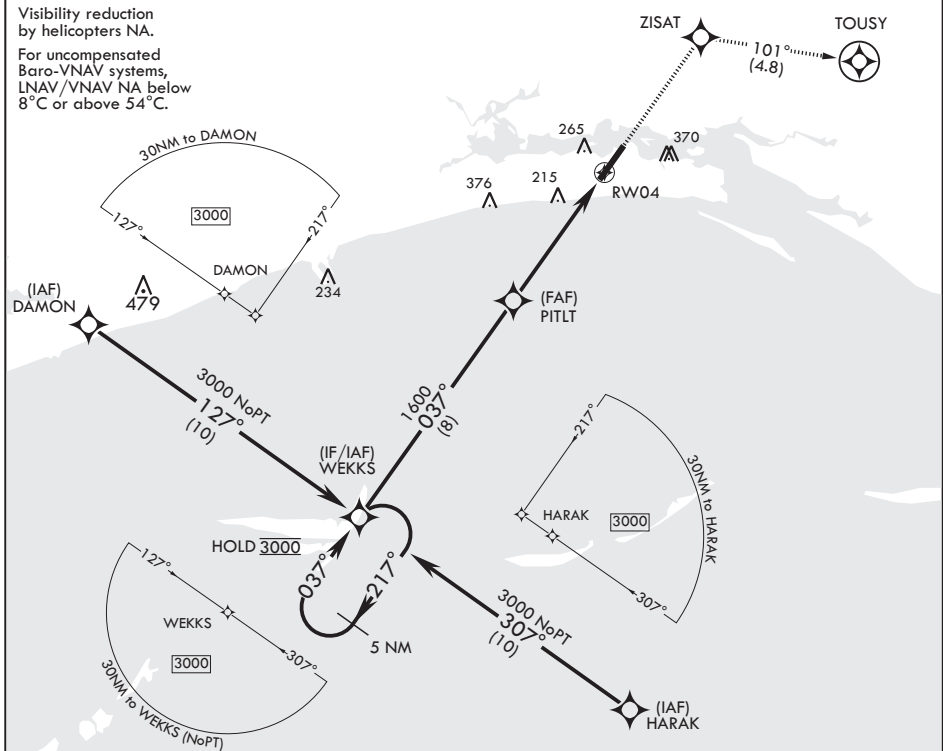
- (USAF)

KEESLER AFB (KBIX)

RNP APCH MISSED APPROACH: Climb to 2100 direct ZISAT and track 101° to TOUSY. Expect ATC instructions.

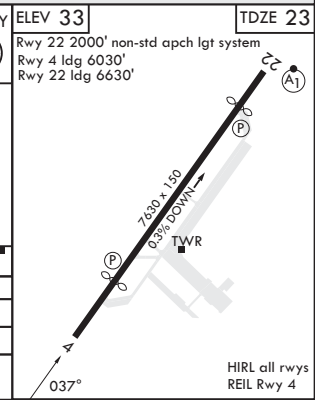
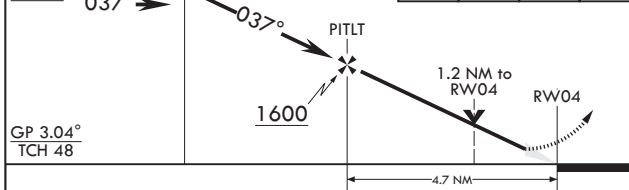
ATIS★ 281.55	GULFPORT APP CON/DEP CON★ 124.6 354.1 130° - 309° 127.5 254.25 310° - 129°	TOWER★ 120.75 269.075	GND CON★ 121.8 275.8	CLNC DEL 121.8 275.8
-----------------	--	--------------------------	-------------------------	-------------------------

Visibility reduction by helicopters NA.  
For uncompensated Baro-VNAV systems, LNAV/VNAV NA below 8°C or above 54°C.



EMERG SAFE ALT 100 NM 3100

5 NM Holding Pattern WEKKS	2100	ZISAT	TOUSY	ELEV 33	TDZE 23
3000	↑	⬠	tr 101°	⬠	
GP 3.04° TCH 48				Rwy 22 2000' non-std apch lgt system	
				Rwy 4 ldg 6030'	
				Rwy 22 ldg 6630'	



CATEGORY	A	B	C	D
LNAV/VNAV DA	391/55	368	(400-1)	
LNAV MDA	460/55 437 (500-1)	460-1¼ 437 (500-1¼)		
CRCLING	580-1 547 (600-1)	660-1 627 (700-1)	680-1¼ 647 (700-1¼)	680-2 647 (700-2)

BILOXI, MISSISSIPPI  
Amdt 2 07SEP23

30°25'N - 88°55'W

KEESLER AFB (KBIX)

# RNAV (GPS) RWY 4

SC-4, 11 JUN 2026 to 09 JUL 2026

SC-4, 11 JUN 2026 to 09 JUL 2026

HIRL all rwy  
REIL Rwy 4