

TACAN RWY 22

TACAN BIX Chan 55	APCH CRS 222°	Rwy ldg THRE Arprt Elev 6630 17 33
-----------------------------	-------------------------	--

[USAF]

KEESLER AFB (KBIX)

▼ * When ALS inop, increase CAT AB RVR to 55, vis to 1 mile; CAT CD vis to 1¼ miles.

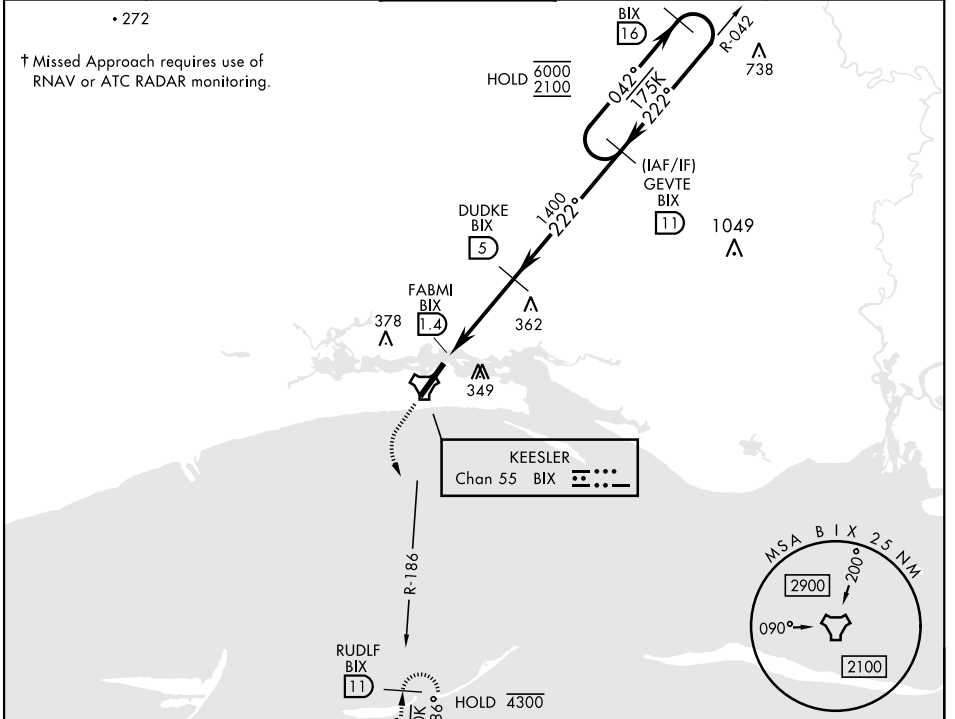
ALSF-1 

† MISSED APPROACH: Climb to 800 tracking 215°, then turn left to intercept BIX R-186 to 11 DME (RUDLF) climbing to 2200 and hold.

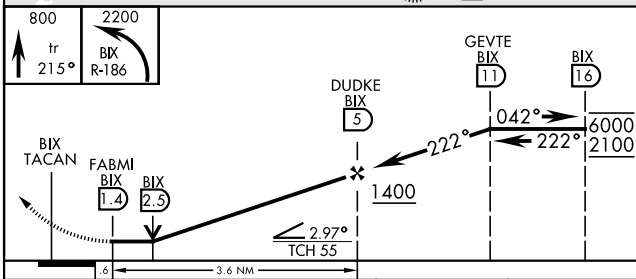
ATIS★ 281.55	GULFPORT APP CON★ 124.6 354.1 (130°-309°) 127.5 254.25 (310°-129°)	TOWER★ 120.75 269.075	GND CON★ 121.8 275.8	CLNC DEL 121.8 275.8
------------------------	--	---------------------------------	--------------------------------	--------------------------------

• 272

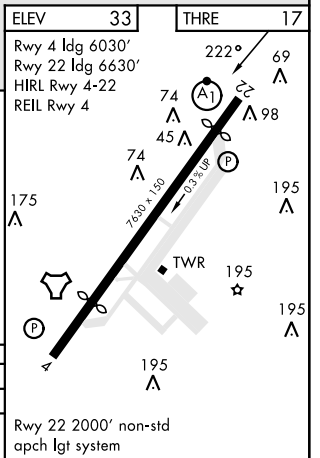
† Missed Approach requires use of RNAV or ATC RADAR monitoring.



EMERG SAFE ALT 100 NM 3100



CATEGORY	A	B	C	D
S-22*	620/40 603 (600-¾)	660-1	680-1½ 603 (600-1½)	680-2
CIRCLING	587 (600-1)	627 (700-1)	647 (700-1¾)	647 (700-2)



TACAN RWY 22

SC-4, 11 JUN 2026 to 09 JUL 2026

SC-4, 11 JUN 2026 to 09 JUL 2026