

# TACAN RWY 4

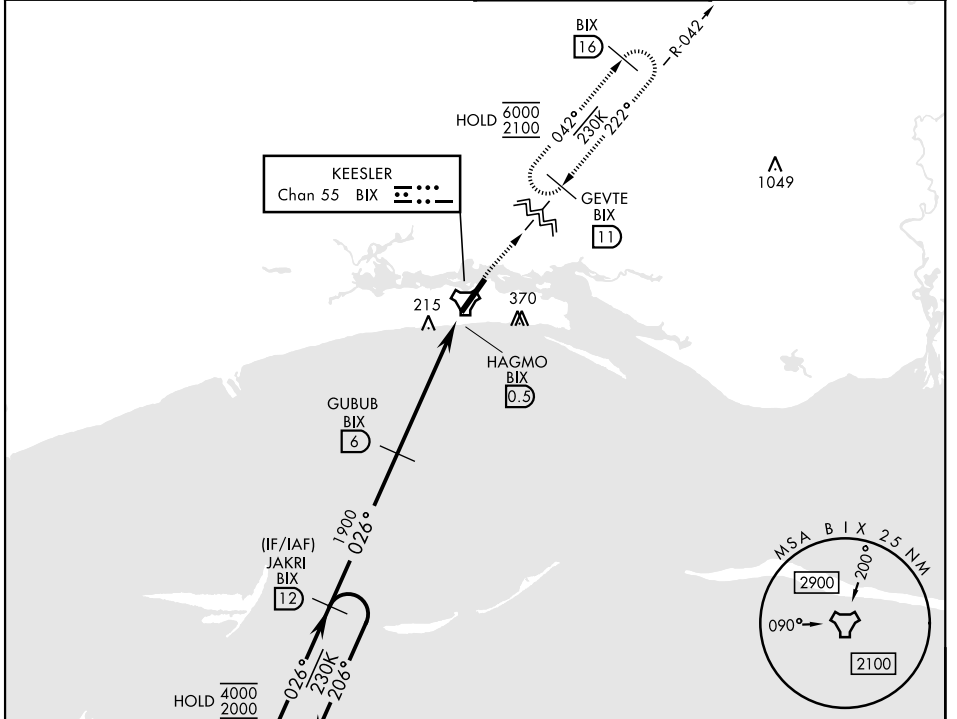
TACAN BIX Chan <b>55</b>	APCH CRS <b>026°</b>	Rwy Idg TDZE Arprt Elev <b>6030</b> <b>23</b> <b>33</b>
-----------------------------	-------------------------	--

[USAF]

KEESLER AFB (KBIX)

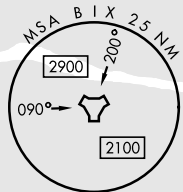
▼ Visibility reduction by helicopters NA. MISSED APPROACH: Climbing right turn to 2100 direct GEVTE/BIX 11 DME and hold. Missed approach requires use of RNAV or ATC RADAR monitoring.

ATIS ★ <b>281.55</b>	GULFPORT APP CON ★ <b>124.6 354.1</b> (130° - 30°) <b>127.5 254.25</b> (310° - 129°)	KEESLER TOWER ★ <b>120.75 269.075</b>	GND CON ★ <b>121.8 275.8</b>
-------------------------	--	--	---------------------------------



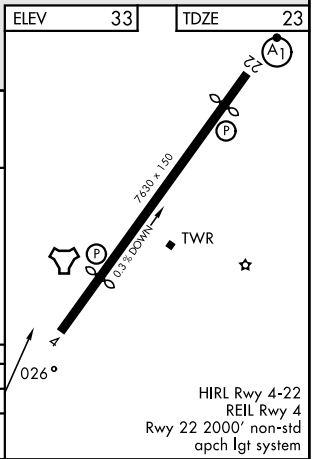
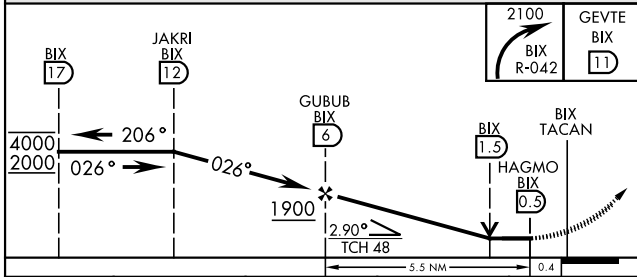
A 1049

KEESLER  
Chan 55 BIX



ELEV	33	TDZE	23
------	----	------	----

EMERG SAFE ALT 100 NM 3100



CATEGORY	A	B	C	D
S-4	520/55 497 (500-1)		520-1 3/8 497 (500-1 3/8)	
CIRCLING	580-1 547 (600-1)	660-1 627 (700-1)	680-1 3/4 647 (700-1 3/4)	680-2 647 (700-2)

HIRL Rwy 4-22  
REIL Rwy 4  
Rwy 22 2000' non-st-d  
apch lgt system

# TACAN RWY 4

SC-4, 11 JUN 2026 to 09 JUL 2026

SC-4, 11 JUN 2026 to 09 JUL 2026