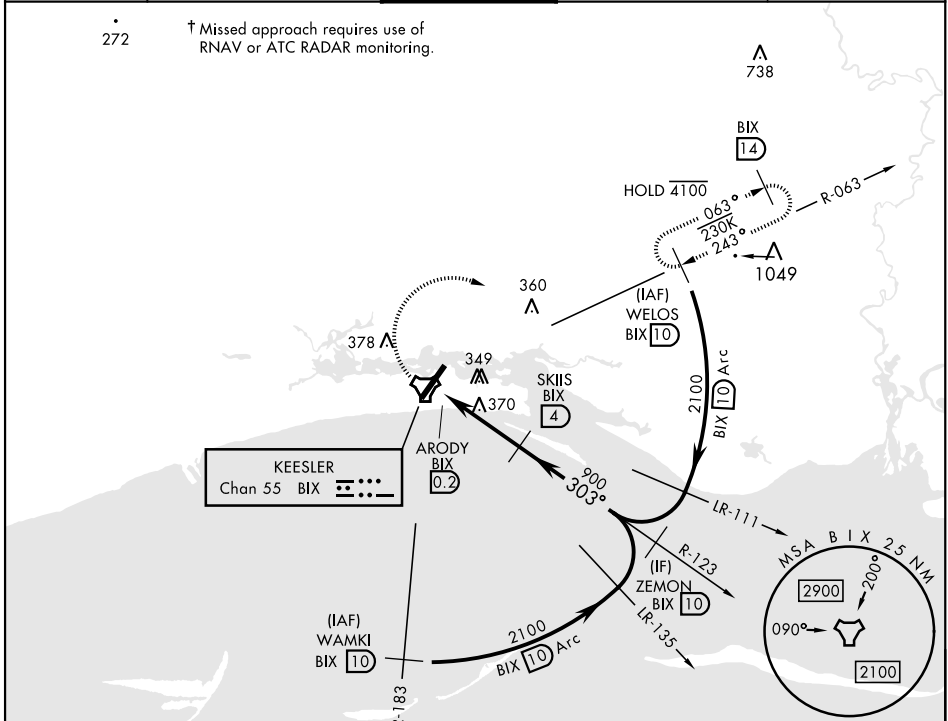


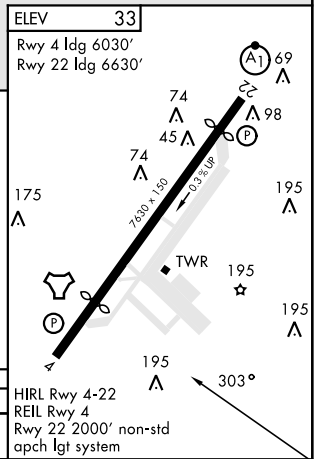
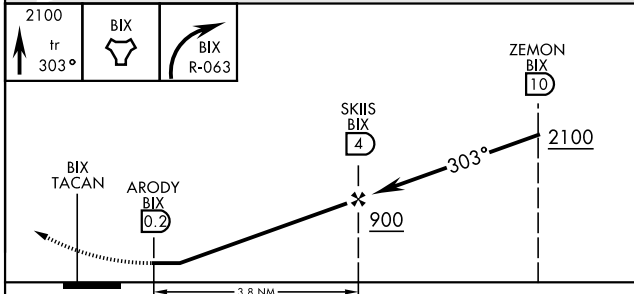
TACAN-A

TACAN BIX Chan 55	APCH CRS 303°	Rwy ldg THRE Arpt Elev N/A N/A 33	[USAF]	KEESLER AFB (KBIX)
<p>† MISSED APPROACH: Climb tracking 303° to BIX TACAN then right turn to intercept BIX R-063 climbing to 2100 to 10 DME (WELOS) and hold.</p>				

ATIS ★ 281.55	GULFPORT APP CON ★ 124.6 354.1 (130°-309°) 127.5 254.25 (310°-129°)	TOWER ★ 120.75 269.075	GND CON ★ 121.8 275.8	CLNC DEL 121.8 275.8
-------------------------	---	----------------------------------	---------------------------------	--------------------------------



EMERG SAFE ALT 100 NM 3100



CATEGORY	A	B	C	D
CIRCLING	620-1 587 (600-1)	660-1 627 (700-1)	680-1 3/4 647 (700-1 3/4)	680-2 647 (700-2)

ELEV 33
Rwy 4 ldg 6030'
Rwy 22 ldg 6630'

HIRL Rwy 4-22
REIL Rwy 4
Rwy 22 2000' non-std
apch lgt system

TACAN-A

SC-4, 11 JUN 2026 to 09 JUL 2026

SC-4, 11 JUN 2026 to 09 JUL 2026