

BILOXI, MISSISSIPPI

TACAN-B

VORTAC GPT 109.0 Chan 27	APCH CRS 266°	Rwy ldg TDZE Arpt Elev N/A N/A 33
--	-------------------------	---

[USAF]

KEESLER AFB (KBIX)

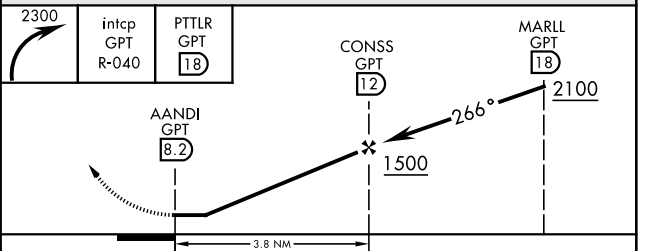
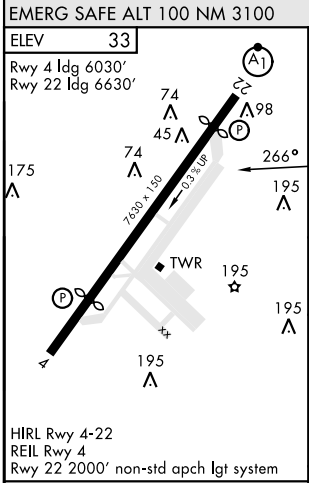
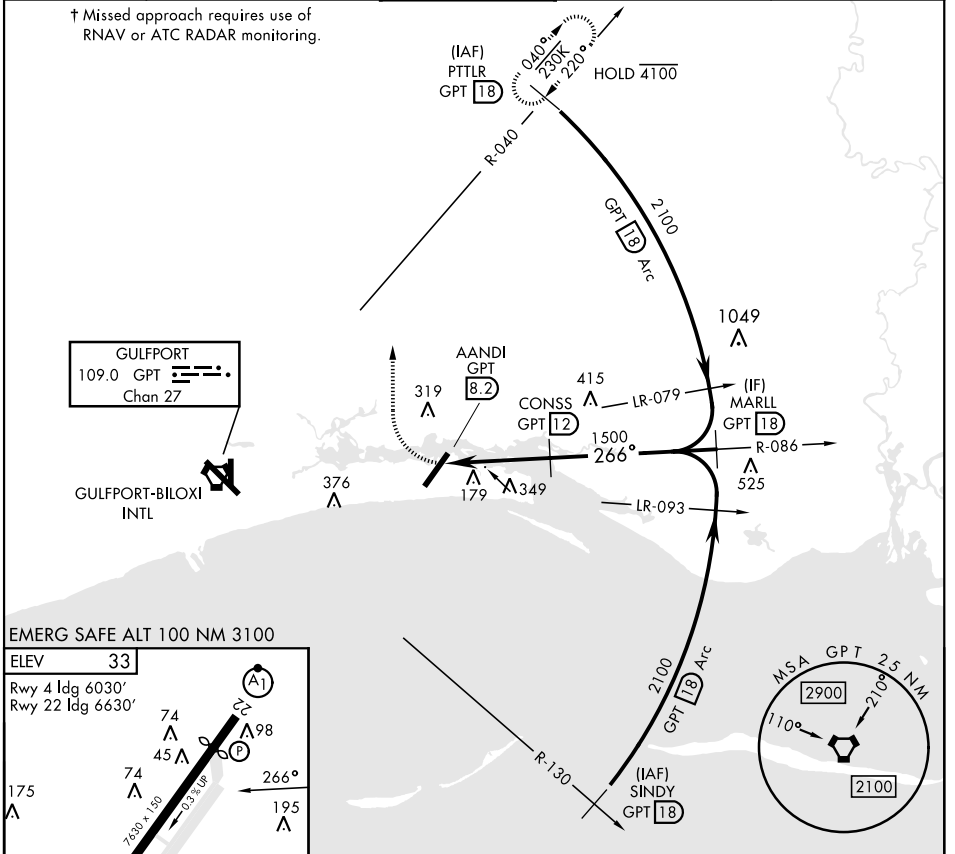
† MISSED APPROACH: Climbing right turn to 2300 inctcp GPT VORTAC R-040 to PTTLR (R-040/18 DME) and hold.

ATIS ★ 281.55	GULFPORT APP CON ★ 124.6 354.1 (130°-309°) 127.5 254.25 (310°-129°)	TOWER ★ 120.75 269.075	GND CON ★ 121.8 275.8	CLNC DEL 121.8 275.8
-------------------------	---	----------------------------------	---------------------------------	--------------------------------

† Missed approach requires use of RNAV or ATC RADAR monitoring.

GULFPORT
109.0 GPT
Chan 27

GULFPORT-BILOXI INTL



FAF to MAP 3.8 NM					
Knots	60	90	120	150	180
Min:Sec	3:48	2:32	1:54	1:31	1:16
CATEGORY	A	B	C	D	
CIRCLING	620-1	660-1	680-1¾	680-2	
	587 (600-1)	627 (700-1)	647 (700-1¾)	647 (700-2)	

BILOXI, MISSISSIPPI

30° 25' N-88° 55' W

KEESLER AFB (KBIX)

Amdt 3 03NOV22

TACAN-B

SC-4, 11 JUN 2026 to 09 JUL 2026

SC-4, 11 JUN 2026 to 09 JUL 2026