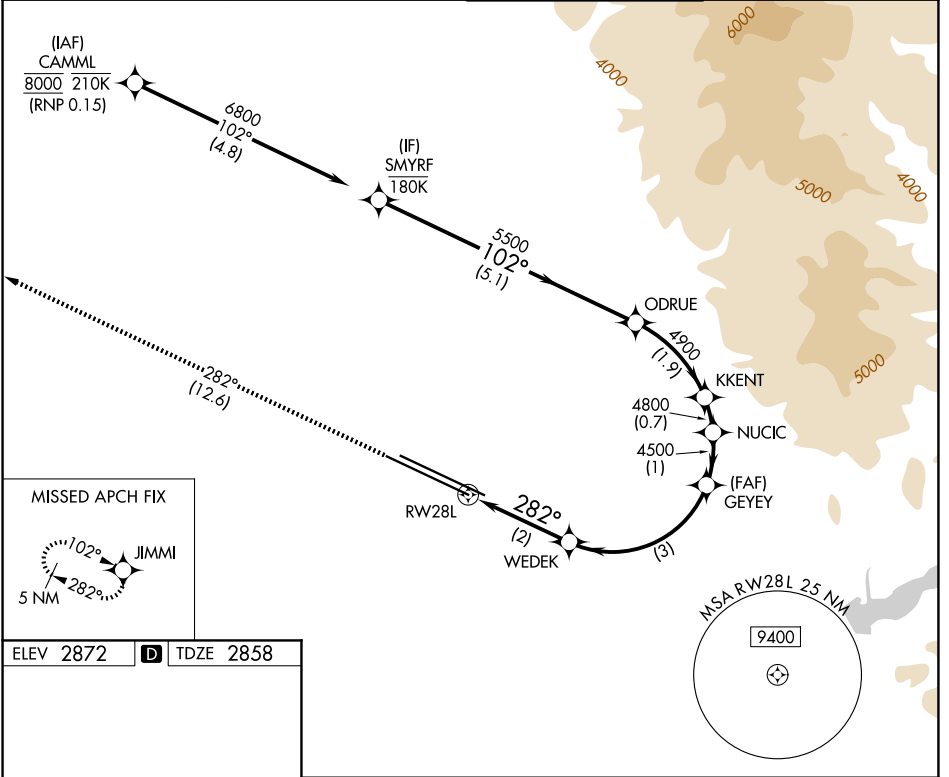


APP CRS	Rwy Ldg	<b>9763</b>
<b>282°</b>	TDZE	<b>2858</b>
	Apt Elev	<b>2872</b>

# RNAV (RNP) X RWY 28L

BOISE AIR TRML/GOWEN FLD (BOI)

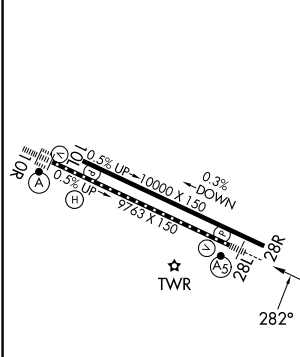
RNP AR APCH - GPS.		MALSR	MISSED APPROACH: Climb to 6000 on track 282° to JIMMI and hold, continue climb-in-hold to 6000.
For uncompensated Baro-VNAV systems, procedure NA below -14°C or above 54°C.			
D-ATIS	BIG SKY APP CON	BOISE TOWER	GND CON
<b>123.9 290.4</b>	<b>119.6 269.4</b>	<b>118.1 257.8</b>	<b>121.7 348.6</b>



NW-1, 11 JUN 2026 to 09 JUL 2026

NW-1, 11 JUN 2026 to 09 JUL 2026

ELEV 2872	<b>D</b>	TDZE 2858
-----------	----------	-----------



6000	JIMMI	VGSi and RNAV glidepath not coincident (VGSi Angle 3.00/TCH 50).				SMYRF	
tr 282°		WEDEK	GYEY	NUCIC	KKENT	ODRUE	
		3545	4500	4800	4900	5500	
			4500				
						6800	
						GP 3.00°	
						TCH 50	
		2 NM	3 NM	1 NM	0.7 NM	1.9 NM	5.1 NM
CATEGORY	A	B	C	D			
RNP 0.15 DA	3229/35 371 (400- $\frac{1}{2}$ )						

REL Rwy 10L  
 TDZ/CL Rwy 10R and 28L  
 HIRL Rwy 10L-28R and 10R-28L

**AUTHORIZATION REQUIRED**