

APP CRS	Rwy Ldg	10000
102°	TDZE	2844
	Apt Elev	2872

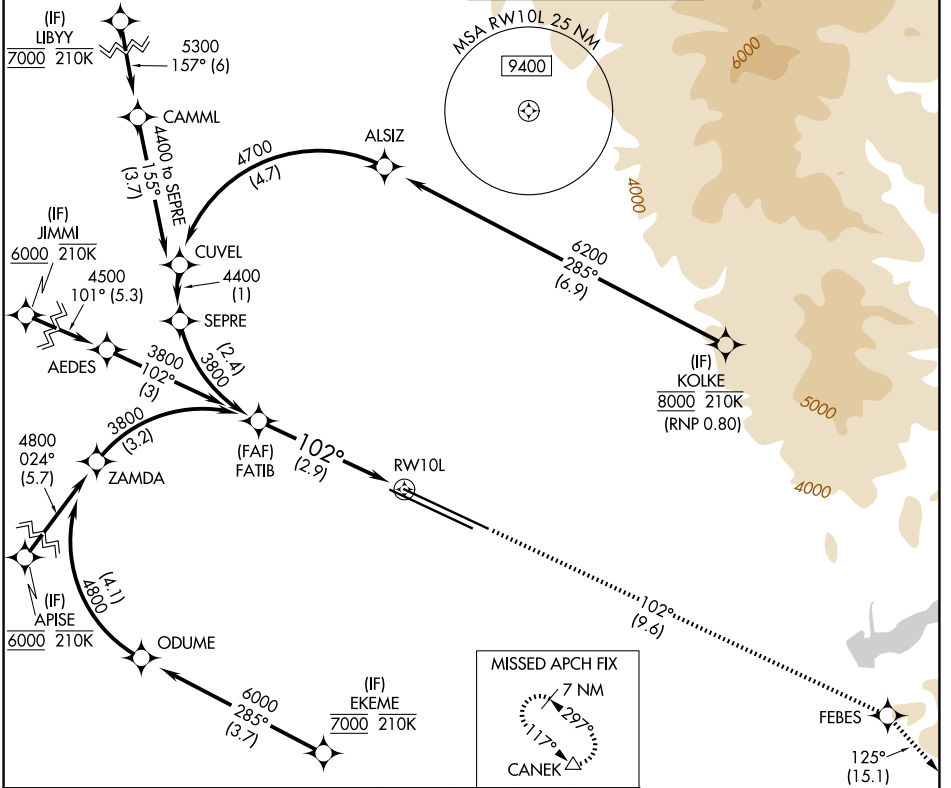
RNAV (RNP) Z RWY 10L

BOISE AIR TRML/GOWEN FLD (BOI)

RNP AR APCH - GPS.
 ▼ For uncompensated Baro-VNAV systems, procedure NA below -1.4°C or above 54°C.

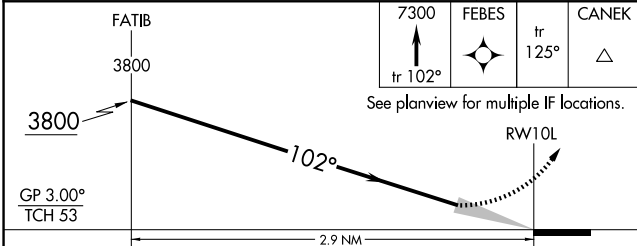
MISSED APPROACH: Climb to 7300 on track 102° to FEBES and on track 125° to CANEK and hold.

D-ATIS 123.9 290.4	BIG SKY APP CON 119.6 269.4	BOISE TOWER 118.1 257.8	GND CON 121.7 348.6
------------------------------	---------------------------------------	-----------------------------------	-------------------------------



NW-1, 11 JUN 2026 to 09 JUL 2026

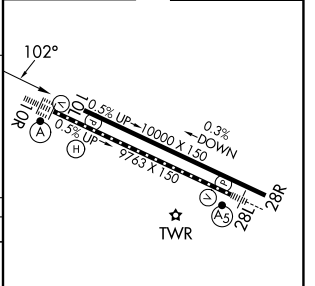
NW-1, 11 JUN 2026 to 09 JUL 2026



ELEV 2872	D	TDZE 2844
-----------	----------	-----------

CATEGORY	A	B	C	D
RNP 0.30 DA	3237-1 1/8 393 (400-1 1/8)			

AUTHORIZATION REQUIRED



REIL Rwy 10L
 TDZ/CL Rwy 10R and 28L
 HIRL Rwy 10L-28R and 10R-28L