

**HYLND SEVEN DEPARTURE (RNAV)**

AL-58 (FAA)

BOSTON, MASSACHUSETTS

BOSTON DEP CON  
133.0  
D-ATIS 135.0  
CLNC DEL  
121.65 257.8  
CPDLC  
GND CON  
121.75 121.9  
BOSTON TOWER  
128.8 257.8 (WEST)  
132.225 257.8 (EAST)

RNAV 1 - DME/DME/IRU or GPS.

**TOP ALTITUDE:**  
**5000**

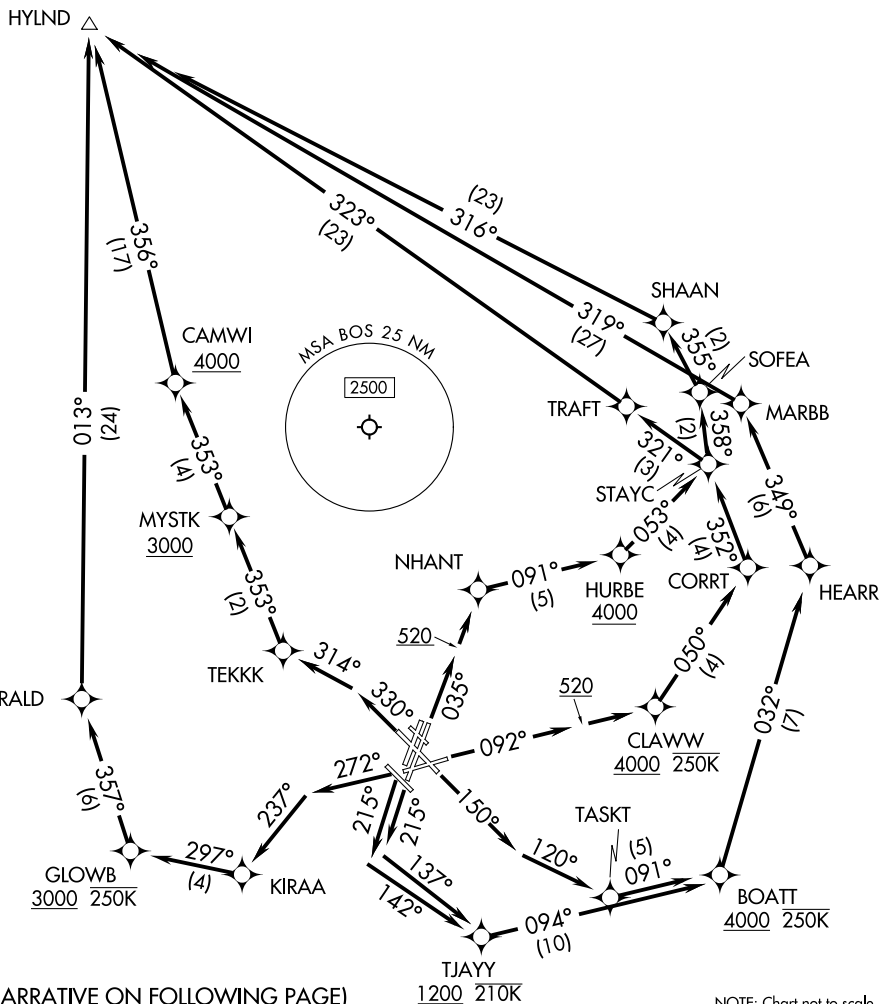
RADAR required for non-GPS equipped aircraft.

**TAKEOFF MINIMUMS:**

Rwys 4L, 14, 15L, 32, 33R: NA-ATC.  
Rwys 4R, 9, 15R, 22R, 33L: Standard with minimum climb of 500'/NM to 520.  
Rwy 22L: 300-1 with minimum climb of 500'/NM to 520, or standard with minimum climb of 500'/NM to 520 if tower reports no tall vessels in the departure area.  
Rwy 27: Standard with minimum climb of 500'/NM to 1300.

△ MANCH

NOTE: Jet aircraft only.



NE-1, 11 JUN 2026 to 09 JUL 2026

NE-1, 11 JUN 2026 to 09 JUL 2026