

LOC/DME I-MDC	APP CRS	Rwy Ldg	<b>9201</b>
<b>110.7</b>	<b>149°</b>	TDZE	<b>17</b>
Chan <b>44</b>		Apt Elev	<b>19</b>

# ILS or LOC RWY 15R

GENERAL EDWARD LAWRENCE LOGAN INTL (BOS)

RNP APCH - GPS. From AADMS.

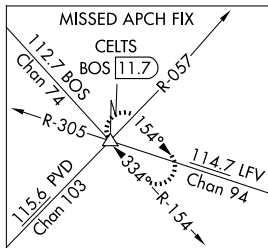
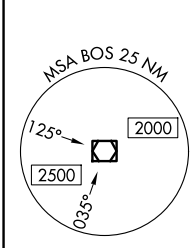
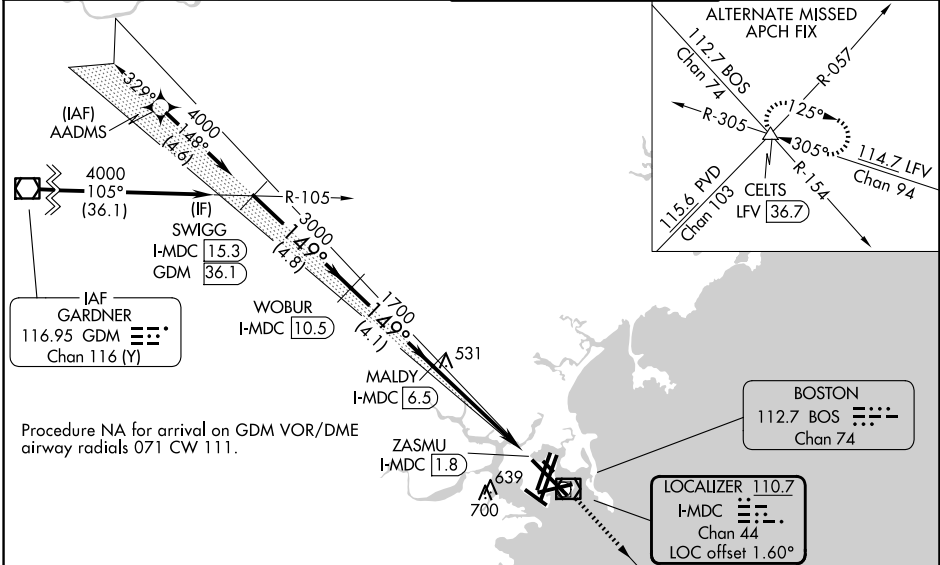
DME required.

For inop ALS, increase S-LOC 15R Cats C/D visibility to 1½ SM.

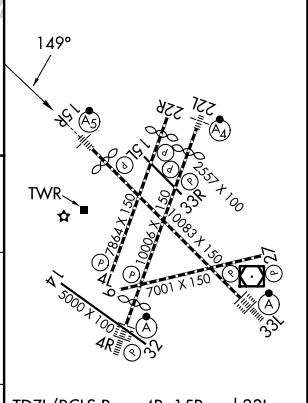
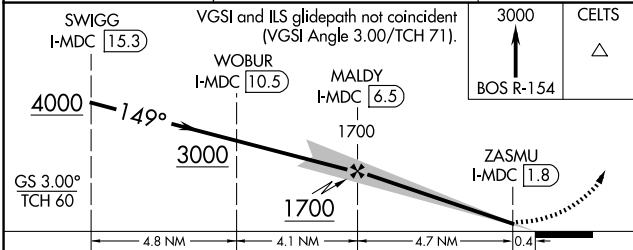


MISSED APPROACH: Climb to 3000 on BOS VOR/DME R-154 to CELTS INT/BOS 11.7 DME and hold.

D-ATIS <b>135.0</b>	BOSTON APP CON <b>120.6 263.1</b>	BOSTON TOWER <b>128.8 257.8 (WEST)</b> <b>132.225 257.8 (EAST)</b>	GND CON <b>121.75 121.9</b>
------------------------	--------------------------------------	--	--------------------------------



ELEV 19	<b>D</b>	TDZE 17
---------	----------	---------



CATEGORY	A	B	C	D
S-ILS 15R		267/24	250 (300-½)	
S-LOC 15R	580/24	563 (600-½)	580-1¼	563 (600-1¼)

NE-1, 11 JUN 2026 to 09 JUL 2026

NE-1, 11 JUN 2026 to 09 JUL 2026