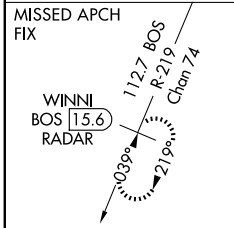
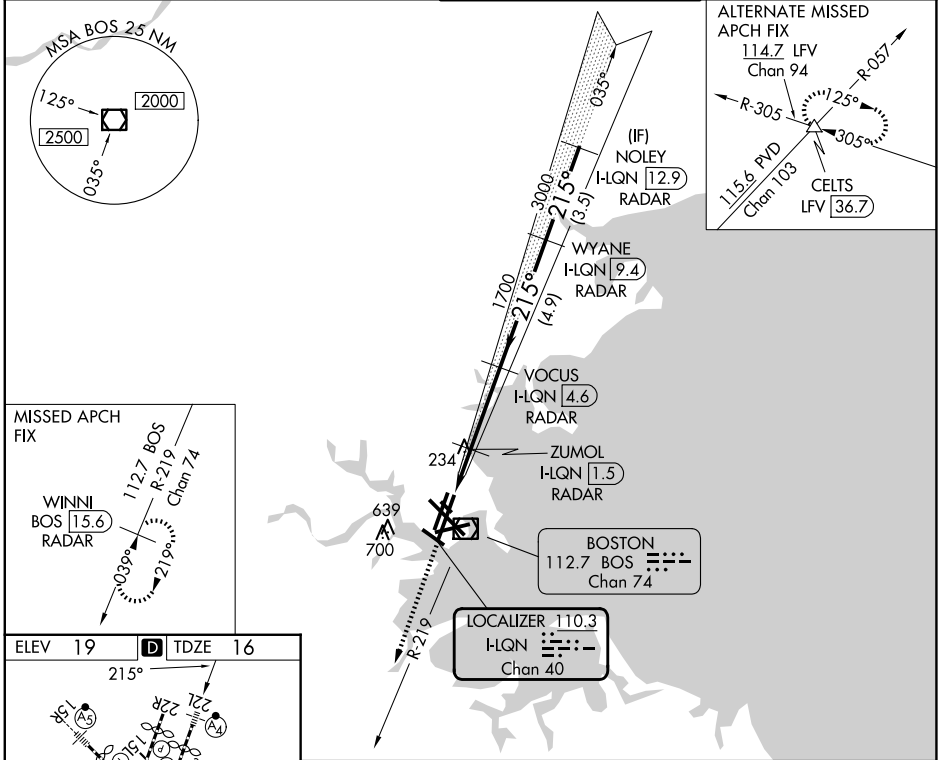


LOC/DME I-LQN <b>110.3</b> Chan <b>40</b>	APP CRS <b>215°</b>	Rwy Ldg <b>8806</b> TDZE <b>16</b> Apt Elev <b>19</b>
---	------------------------	---

# ILS or LOC RWY 22L

GENERAL EDWARD LAWRENCE LOGAN INTL (BOS)

RADAR required for procedure entry. DME or RADAR required.		MALSF 	MISSED APPROACH: Climb to 3000 on BOS VOR/DME R-219 to WINNI/ BOS 15.6 DME/RADAR and hold.
Inop table does not apply to S-ILS 22L.			
D-ATIS <b>135.0</b>	BOSTON APP CON <b>120.6 263.1</b>	BOSTON TOWER <b>128.8 257.8 (WEST)</b> <b>132.225 257.8 (EAST)</b>	GND CON <b>121.75 121.9</b>



ELEV 19	<b>D</b> TDZE 16
215°	
TDZL/RCLS Rws 4R, 15R and 33L REIL Rws 4L, 27 and 32 MRL Rwy 15L-33R HIRL Rws 4L-22R, 4R-22L, 9-27, 14-32 and 15R-33L	
FAF to MAP 5.1 NM	
Knots	60 90 120 150 180
Min:Sec	5:06 3:24 2:33 2:02 1:42

3000	WINNI BOS 15.6	VGSi and ILS glidepath not coincident (VGSi Angle 3.00/TCH 71).		WYANE I-LQN 9.4 RADAR	NOLEY I-LQN 12.9 RADAR	
BOS R-219	ZUMOL I-LQN 1.5 RADAR	VOCUS I-LQN 4.6 RADAR	1700	215°	4000	
I-LQN DME ANT.	I-LQN 0.9	1700	3000		GS 3.00° TCH 55	
		1.4 NM	0.6	3.1 NM	4.9 NM	3.5 NM
CATEGORY	A	B	C	D		
S-ILS 22L	216/40 200 (200-¾)					
S-LOC 22L	540/40	524 (600-¾)	540-1¼	524 (600-1¼)		

NE-1, 11 JUN 2026 to 09 JUL 2026

NE-1, 11 JUN 2026 to 09 JUL 2026