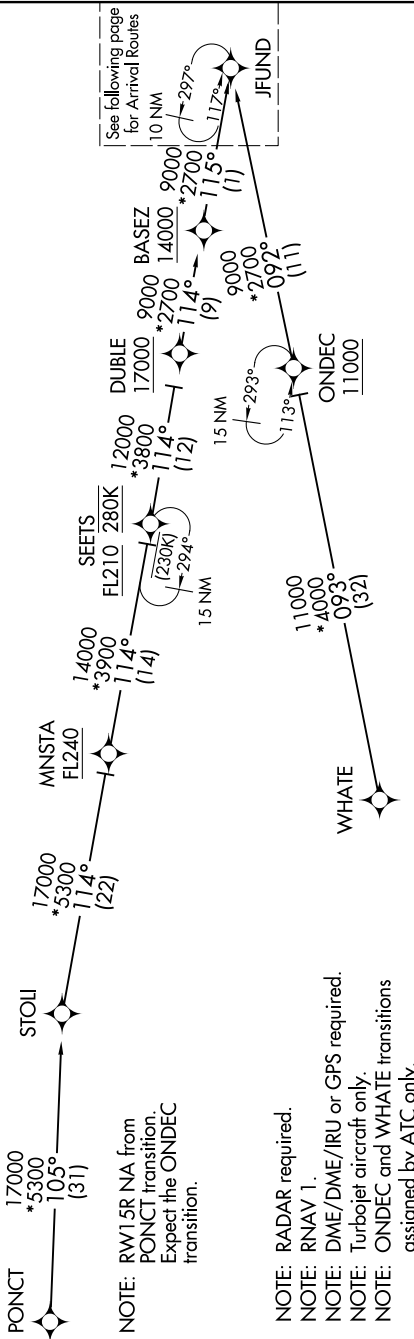


JFUND TWO ARRIVAL(RNAV) Transition Routes

NE-1, 11 JUN 2026 to 09 JUL 2026

D-ATIS
135.0
BOSTON APP CON
120.6 263.1



See following page
for Arrival Routes

NOTE: RW15R NA from
PUNCT transition.
Expect the ONDEC
transition.

- NOTE: RADAR required.
- NOTE: RNAV 1.
- NOTE: DME/DME/IRU or GPS required.
- NOTE: Turbojet aircraft only.
- NOTE: ONDEC and WHATE transitions assigned by ATC only.



ONDEC TRANSITION [ONDEC.JFUND2]:
 PUNCT TRANSITION [PUNCT.JFUND2]:
 WHATE TRANSITION [WHATE.JFUND2]:

NOTE: Not to scale. (CONTINUED ON FOLLOWING PAGE)

JFUND TWO ARRIVAL(RNAV) Transition Routes

NE-1, 11 JUN 2026 to 09 JUL 2026