

(LBSTA8.LBSTA) 24193

GENERAL EDWARD LAWRENCE LOGAN INTL (BOS)

LBSTA EIGHT DEPARTURE (RNAV)

AL-58 (FAA)

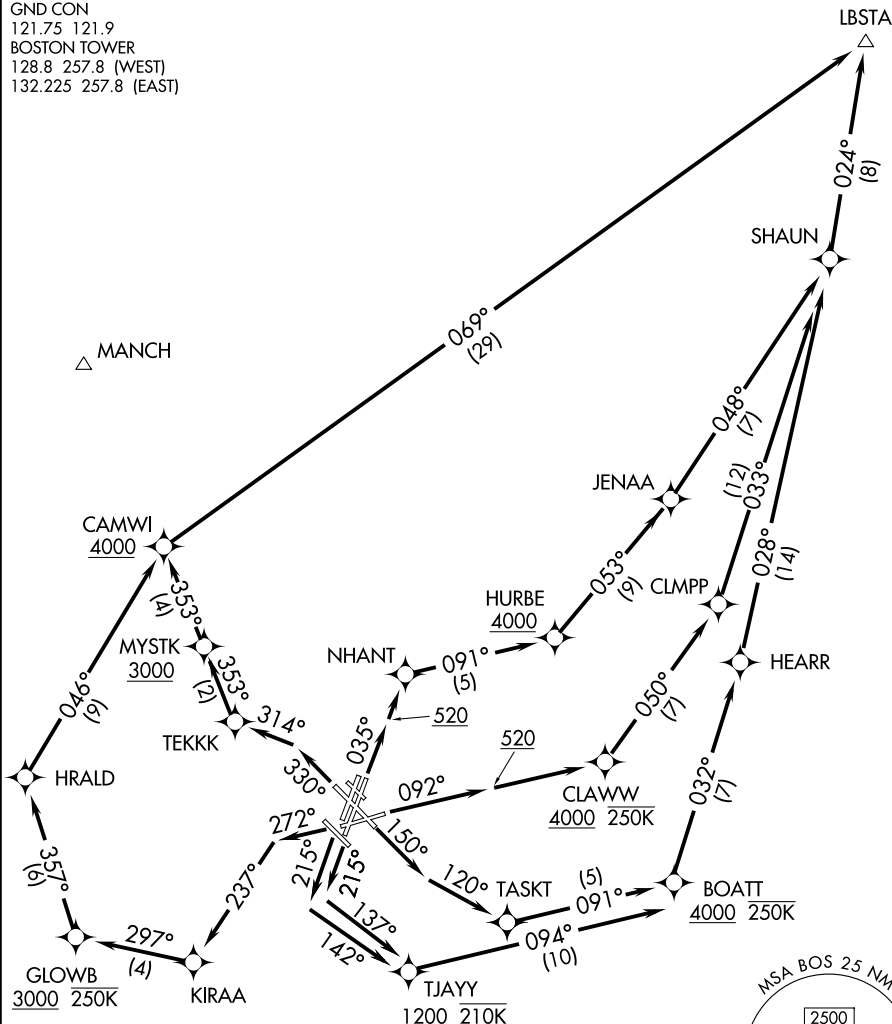
BOSTON, MASSACHUSETTS

BOSTON DEP CON
133.0
D-ATIS 135.0
CLNC DEL
121.65 257.8
CPDLC
GND CON
121.75 121.9
BOSTON TOWER
128.8 257.8 (WEST)
132.225 257.8 (EAST)

RNAV 1 - DME/DME/IRU or GPS.
RADAR required for non-GPS equipped aircraft.

**TOP ALTITUDE:
5000**

NOTE: Jet aircraft only.



TAKEOFF MINIMUMS

Rwys 4L, 14, 15L, 32, 33R: NA - ATC.

Rwys 4R, 9, 15R, 22R, 33L: Standard with minimum climb of 500' per NM to 520.

Rwy 22L: 300-1 with minimum climb of 500' per NM to 520, or standard with minimum climb of 500'/NM to 520 if tower reports no tall vessels in the departure area.

Rwy 27: Standard with minimum climb of 500' per NM to 1300.

NOTE: Chart not to scale.

(NARRATIVE ON FOLLOWING PAGE)

LBSTA EIGHT DEPARTURE (RNAV)

BOSTON, MASSACHUSETTS

(LBSTA8.LBSTA) 30NOV23

GENERAL EDWARD LAWRENCE LOGAN INTL (BOS)

NE-1, 11 JUN 2026 to 09 JUL 2026

NE-1, 11 JUN 2026 to 09 JUL 2026