

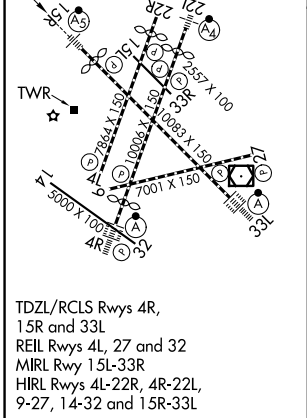
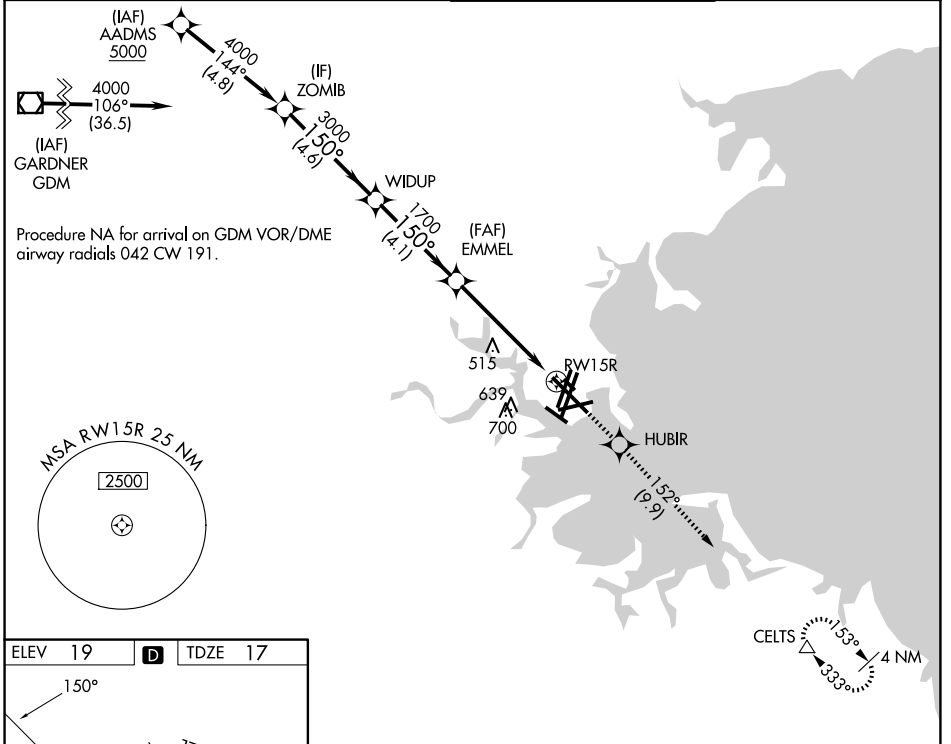
WAAS CH 42925 W15A	APP CRS 150°	Rwy Ldg TDZE Apt Elev	9201 17 19
--	------------------------	-----------------------------	---------------------------------------

RNAV (GPS) RWY 15R

GENERAL EDWARD LAWRENCE LOGAN INTL (BOS)

RNP APCH - GPS.	MALSR	MISSED APPROACH: Climb to 3000 direct HUBIR and on track 152° to CELTS and hold.
⚠ For uncompensated Baro-VNAV systems, LNAV/VNAV NA below -15°C or above 54°C. For inop ALS, increase LNAV Cats C and D visibility to 1 3/8 SM.		

D-ATIS 135.0	BOSTON APP CON 120.6 263.1	BOSTON TOWER 128.8 257.8 (WEST) 132.225 257.8 (EAST)	GND CON 121.75 121.9
------------------------	--------------------------------------	--	--------------------------------



VGSi and RNAV glidepath not coincident (VGSi Angle 3.00/TCH 71).		3000	HUBIR	tr 152°	CE LTS
ZOMB	WIDUP	EMMEL	1.7 NM to RWY 15R		
4000	3000	1700			
GP 3.00°	TCH 60				
4.6 NM		4.1 NM		3.5 NM	
4.6 NM		4.1 NM		3.5 NM	
4.6 NM	4.1 NM	3.5 NM	1.7 NM		
CATEGORY	A	B	C	D	
LPV DA	217/18		200 (200-1/2)		
LNAV/VNAV DA	567-1 1/8		550 (600-1 1/8)		
LNAV MDA	620/24	603 (700-1/2)		620-1 3/8 603 (700-1 3/8)	

NE-1, 11 JUN 2026 to 09 JUL 2026

NE-1, 11 JUN 2026 to 09 JUL 2026