

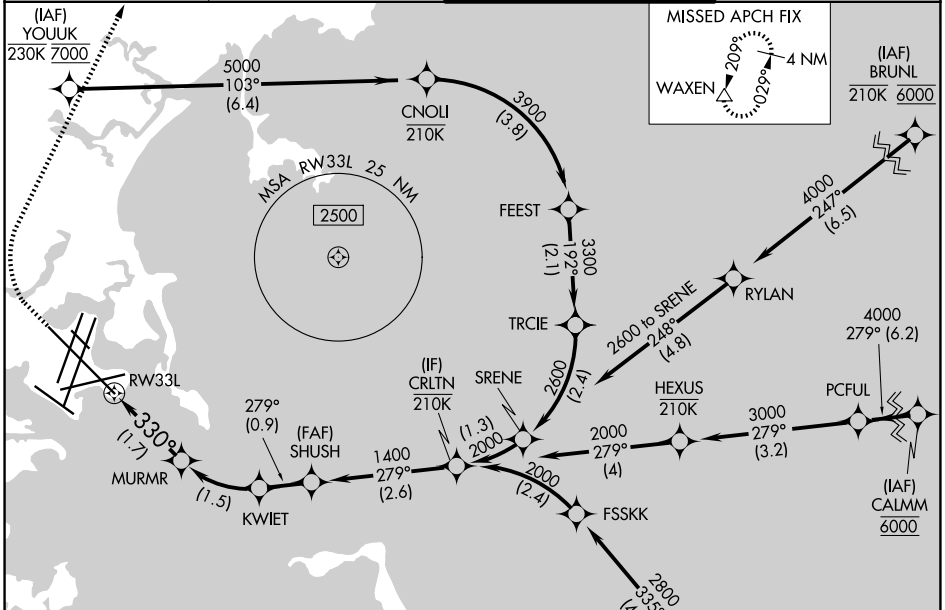
APP CRS	Rwy Ldg	10083
330°	TDZE	16
	Apt Elev	19

RNAV (RNP) X RWY 33L

GENERAL EDWARD LAWRENCE LOGAN INTL (BOS)

RNP AR APCH. RF required.	ALSF-2	MISSED APPROACH: Climb to 600 then climbing right turn to 3000 direct WAXEN and hold.
For uncompensated Baro-VNAV systems, procedure NA below -14°C or above 54°C. For inop ALS, increase RNP 0.30 all cats visibility to RVR 4000.		

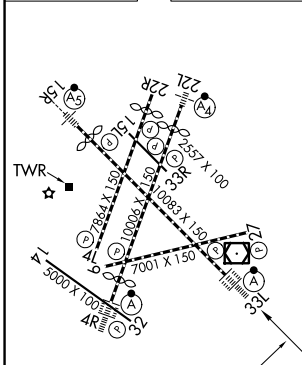
D-ATIS 135.0	BOSTON APP CON 120.6 263.1	BOSTON TOWER 128.8 257.8 (WEST) 132.225 257.8 (EAST)	GND CON 121.75 121.9
------------------------	--------------------------------------	--	--------------------------------



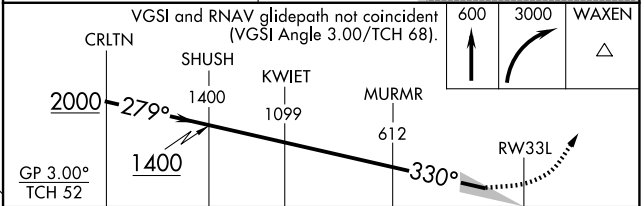
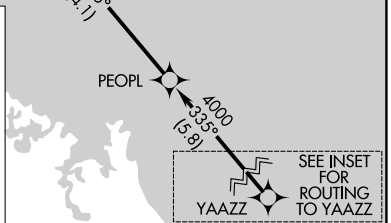
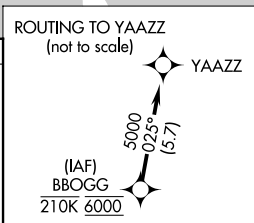
NE-1, 11 JUN 2026 to 09 JUL 2026

NE-1, 11 JUN 2026 to 09 JUL 2026

ELEV 19	D	TDZE 16
---------	----------	---------



TDZL/RCLS Rwy 4R, 15R and 33L
 REIL Rwy 4L, 27 and 32
 MIRL Rwy 15L-33R
 HIRL Rwy 4L-22R, 4R-22L, 9-27, 14-32 and 15R-33L



CATEGORY	A	B	C	D
RNP 0.30 DA	273/24		257 (300-1/2)	

AUTHORIZATION REQUIRED