

WAAS CH <b>45925</b> <b>W22A</b>	APP CRS <b>215°</b>	Rwy Ldg TDZE Apt Elev	<b>8806</b> <b>16</b> <b>19</b>
--	------------------------	-----------------------------	---------------------------------------

# RNAV (GPS) X RWY 22L

GENERAL EDWARD LAWRENCE LOGAN INTL (BOS)

RNP APCH - GPS.

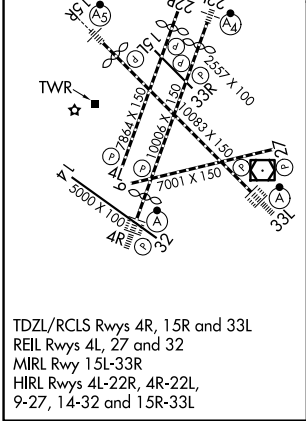
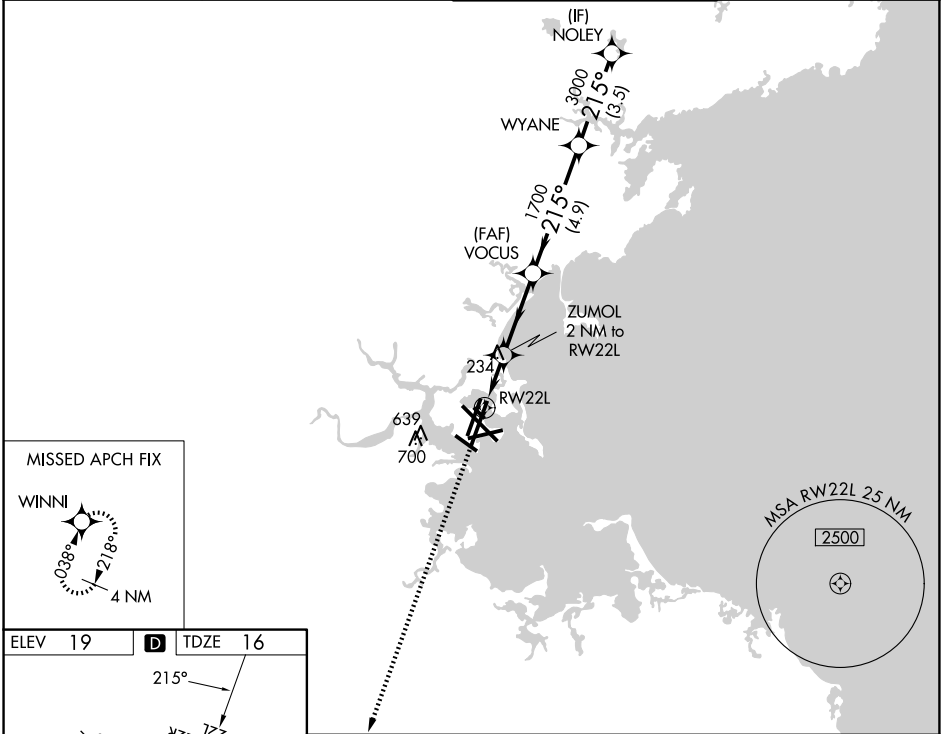
▼ For inop ALS, increase LNAV/VNAV Cat D visibility to RVR 6000 and LNAV Cat D visibility to 1½ SM. For uncompensated Baro-VNAV systems, LNAV/VNAV NA below -13°C or above 43°C.

MALSF



MISSED APPROACH:  
Climb to 3000 direct  
WINNI and hold.

D-ATIS <b>135.0</b>	BOSTON APP CON <b>120.6 263.1</b>	BOSTON TOWER <b>128.8 257.8 (WEST)</b> <b>132.225 257.8 (EAST)</b>	GND CON <b>121.75 121.9</b>
------------------------	--------------------------------------	--	--------------------------------



ELEV 19	<b>D</b>	TDZE 16		
3000	WINNI	VGSI and RNAV glidepath not coincident (VGSI Angle 3.00/TCH 71).		
1700	VOCI	WYANE		
2150	WYANE	NOLEY		
700	RWY 22L	NOLEY 4000		
1.4 NM	0.6	3.1 NM	4.9 NM	3.5 NM
1.4 NM to RWY 22L		1700		
		3000		
				GP 3.00° TCH 55

CATEGORY	A	B	C	D
LPV DA		216/40	200 (200-¾)	
LNAV/VNAV DA		408/50	392 (400-1)	
LNAV MDA	540/40	524 (600-¾)	540-1¼	524 (600-1¼)

NE-1, 11 JUN 2026 to 09 JUL 2026

NE-1, 11 JUN 2026 to 09 JUL 2026