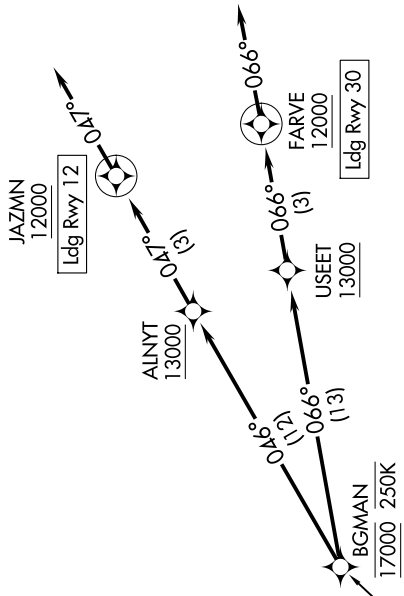


9200 TLN 60 01 9200 TLN 01 1'-WN

BIG SKY APP CON*
 118.975 226.675
 SALT LAKE CENTER
 118.975 226.675
 ATIS
 135.425
 GND CON
 121.8
 BOZEMAN TOWER*
 118.2

RNAV 1 - GPS.
RADAR required.



NOTE: GPS required.
 NOTE: Chart not to scale.

ARRIVAL ROUTE DESCRIPTION
 KARTS TRANSITION (KARTS.BGMAN1)

LANDING RUNWAY 12: From BGMAN on track 046° to cross ALNYT at or above 13000, then on track 047° to cross JAZMN at or above 12000, then on track 047°. Expect RNAV (RNP) RWY 12 approach or RADAR vectors to final approach course.
 LANDING RUNWAY 30: From BGMAN on track 066° to cross USEET at or above 13000, then on track 066° to cross FARVE at or above 12000, then on track 066°. Expect RNAV (RNP) RWY 30 approach or RADAR vectors to final approach course.

NW-1, 11 JUN 2026 to 09 JUL 2026