

WAAS CH 93739 W18A	APP CRS 179°	Rwy Ldg 5810 TDZE 20 Apt Elev 22
--	------------------------	---

RNAV (GPS) RWY 18

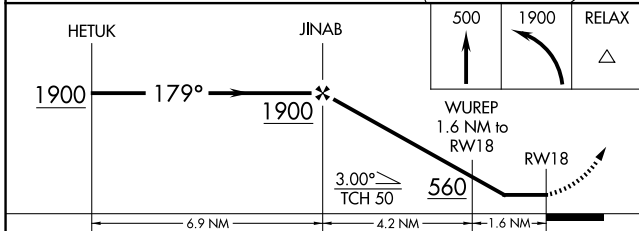
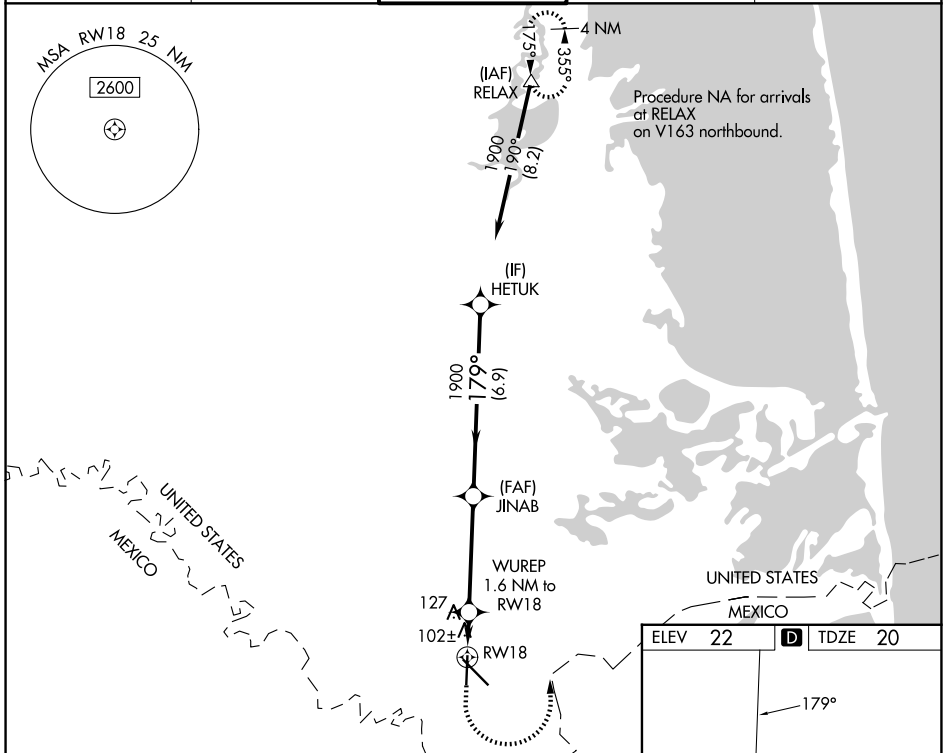
BROWNSVILLE/SOUTH PADRE ISLAND INTL (BRO)

RNP APCH.
RADAR required.

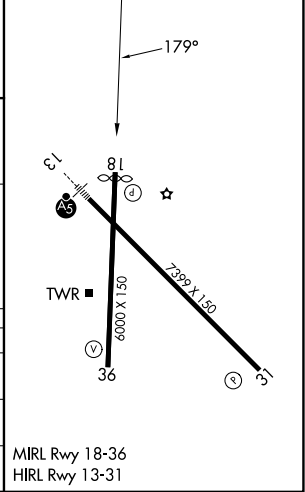
⚠ Rwy 18 helicopter visibility reduction below $\frac{3}{4}$ SM NA. When local altimeter not received, use Port Isabel altimeter setting and increase all MDA 40 feet; increase LNAV Cats C and D visibility $\frac{1}{8}$ mile and Circling Cat D $\frac{1}{4}$ mile.

MISSED APPROACH: Climb to 500 then climbing left turn to 1900 direct RELAX and hold.

ATIS 128.55	VALLEY APP CON 119.5 257.6	BROWNSVILLE TOWER ★ 118.9 (CTAF) 239.3	GND CON 121.9	UNICOM 122.95
-----------------------	--------------------------------------	--	-------------------------	-------------------------



ELEV 22	D	TDZE 20
---------	----------	---------



CATEGORY	A	B	C	D
LP MDA		360-1	340 (400-1)	
LNAV MDA		380-1	360 (400-1)	
CIRCLING	440-1 418 (500-1)	540-1 518 (600-1)	540-1½ 518 (600-1½)	680-2 658 (700-2)

SC-3, 11 JUN 2026 to 09 JUL 2026

SC-3, 11 JUN 2026 to 09 JUL 2026