

WAAS CH <b>65843</b> <b>W31A</b>	APP CRS <b>312°</b>	Rwy Ldg TDZE Apt Elev	<b>7399</b> <b>20</b> <b>22</b>
--	------------------------	-----------------------------	---------------------------------------

# RNAV (GPS) RWY 31

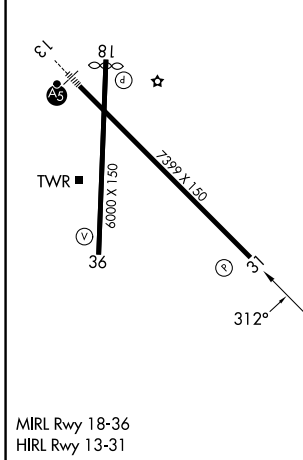
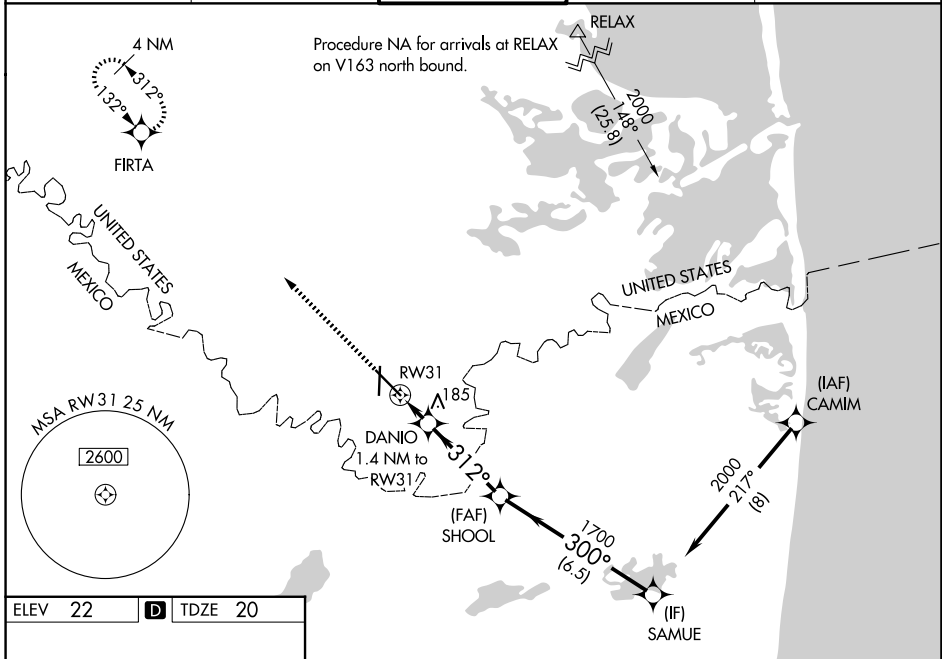
BROWNSVILLE/SOUTH PADRE ISLAND INTL (B.R.O)

RNP APCH - GPS.

**⚠** Rwy 31 helicopter visibility reduction below 3/4 SM NA. Circling Rwy 18 NA at night. For uncompensated Baro-VNAV systems, LNAV/VNAV NA below 1° C or above 54° C.

MISSED APPROACH: Climb to 2000 direct FIRTA and hold.

ATIS <b>128.55</b>	VALLEY APP CON <b>119.5 257.6</b>	<b>BROWNSVILLE TOWER*</b> <b>118.9(CTAF) 239.3</b>	GND CON <b>121.9</b>	UNICOM <b>122.95</b>
-----------------------	--------------------------------------	---	-------------------------	-------------------------



2000 ↑ FIRTA ⬠	VGSI and RNAV glidepath not coincident (VGSI Angle 3.00/TCH 68).			
	DANIO 1.4 NM to RWY 31 0.9 NM to RWY 31 312°			
SHOOL 1700 300°		SAMUE 2000 GP 3.00° TCH 60		
CATEGORY	A	B	C	D
LPV DA		270-3/4	250 (300-3/4)	
LNAV/VNAV DA		270-3/4	250 (300-3/4)	
LNAV MDA		380-1	360 (400-1)	
CIRCLING	440-1 418 (500-1)	500-1 478 (500-1)	540-1 1/2 518 (600-1 1/2)	680-2 658 (700-2)

SC-3, 11 JUN 2026 to 09 JUL 2026

SC-3, 11 JUN 2026 to 09 JUL 2026