


APP CRS	Rwy Ldg	7569
055°	TDZE	708
	Apt Elev	727

RNAV (RNP) Z RWY 5

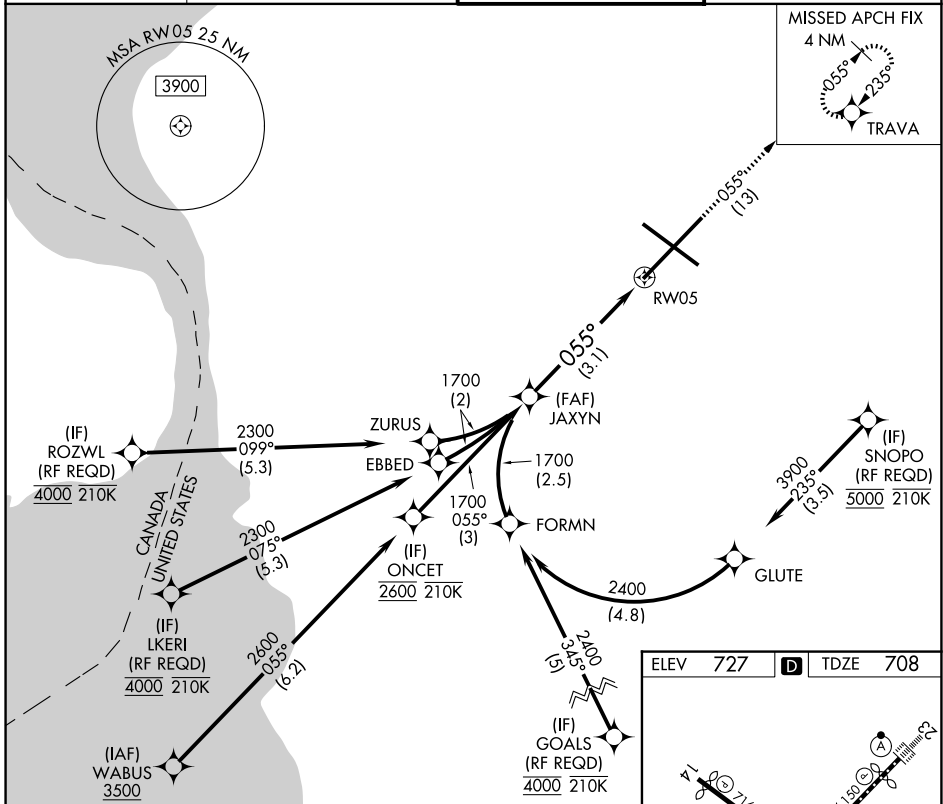
BUFFALO NIAGARA INTL (BUF)

⚠ For uncompensated Baro-VNAV systems, procedure NA below -18°C (0°F) or above 54°C (130°F). GPS required. For inoperative MALS, increase RNP 0.10 all Cats visibility to 1¼. For inoperative MALS, increase RNP 0.30 all Cats visibility to 1½.

MALS 

MISSED APPROACH: Climb to 3000 on the RNAV missed approach route to TRAVA and hold.

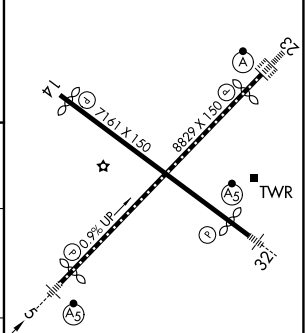
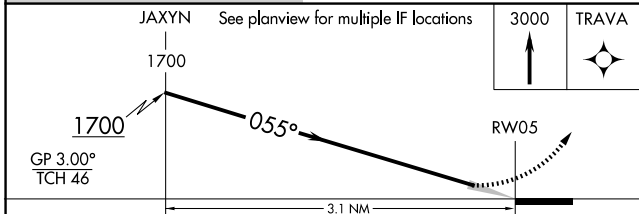
D-ATIS 135.35	BUFFALO APP CON 126.15 263.125	BUFFALO TOWER 120.5 257.8	GND CON 133.2 257.8
-------------------------	--	-------------------------------------	-------------------------------



NE-2, 11 JUN 2026 to 09 JUL 2026

NE-2, 11 JUN 2026 to 09 JUL 2026

ELEV	727	D	TDZE	708
------	-----	----------	------	-----



CATEGORY	A	B	C	D
RNP 0.10 DA		1065/45	357 (400-¾)	
RNP 0.30 DA		1159/60	451 (500-1¼)	

AUTHORIZATION REQUIRED

REIL Rwy 14
 TDZL/RCLS Rwys 5 and 23
 HIRL Rwys 5-23 and 14-32