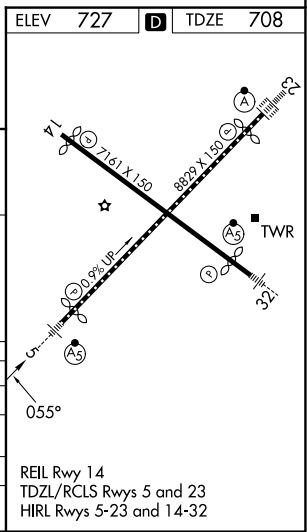
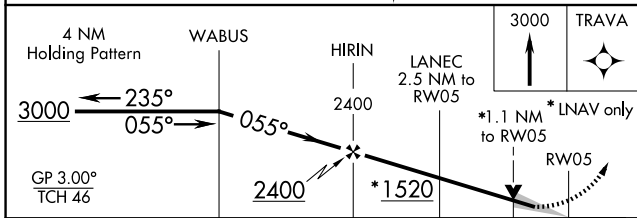
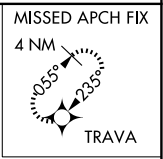
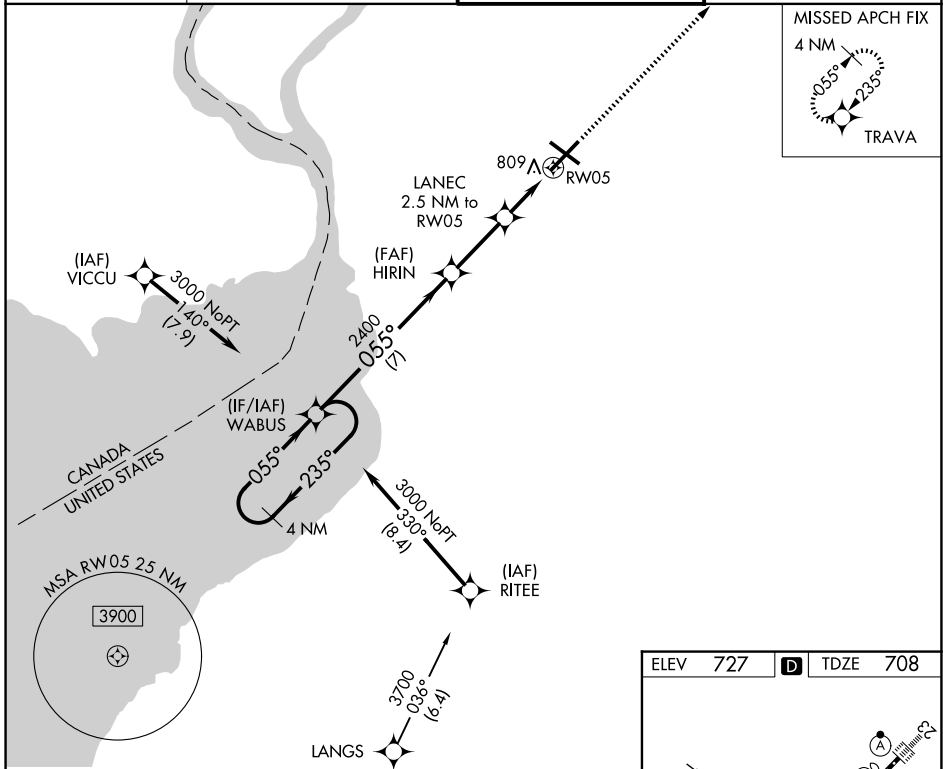


WAAS CH <b>70311</b> <b>W05A</b>	APP CRS <b>055°</b>	Rwy Ldg <b>7569</b> TDZE <b>708</b> Apt Elev <b>727</b>
--	------------------------	--

# RNAV (GPS) Y RWY 5

BUFFALO NIAGARA INTL (BUF)

RNP APCH - GPS		MALSRL	MISSED APPROACH: Climb to 3000 direct TRAVA and hold.
For uncompensated Baro-VNAV systems, LNAV/VNAV NA below -17°C or above 54°C.			
D-ATIS <b>135.35</b>	BUFFALO APP CON <b>126.15 263.125</b>	BUFFALO TOWER <b>120.5 257.8</b>	GND CON <b>133.2 257.8</b>



CATEGORY	A	B	C	D
LPV DA		908/18	200 (200-½)	
LNAV/VNAV DA		997/24	289 (300-½)	
LNAV MDA	1060/24	352 (400-½)	1060/35	352 (400-¾)
CIRCLING	1200-1	473 (500-1)	1220-1½ 493 (500-1½)	1340-2 613 (700-2)

NE-2, 11 JUN 2026 to 09 JUL 2026

NE-2, 11 JUN 2026 to 09 JUL 2026