

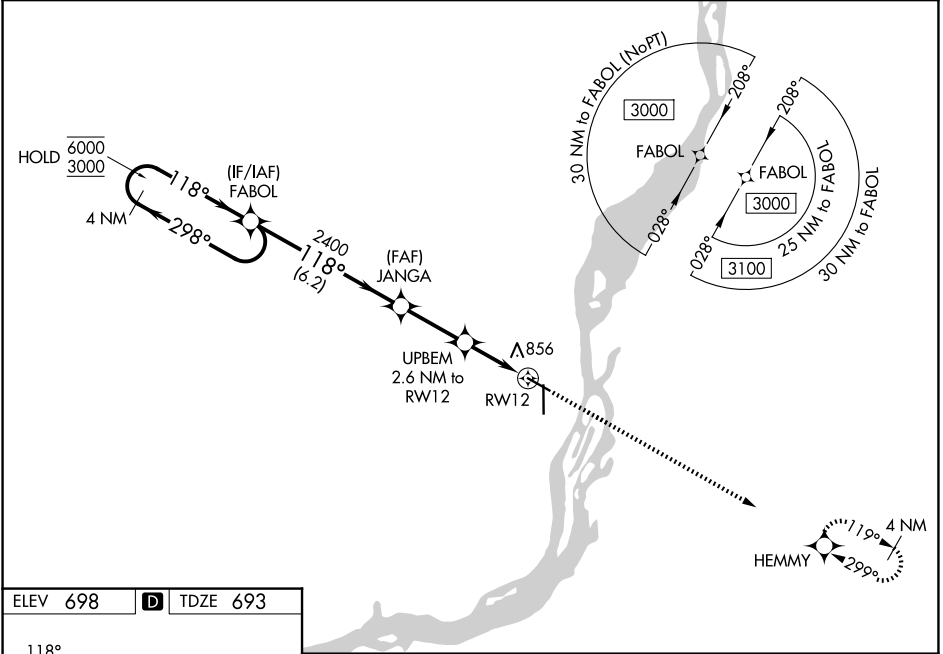
WAAS CH 48834 W12A	APP CRS 118°	Rwy Ldg TDZE Apt Elev	5350 693 698
--	------------------------	-----------------------------	---

RNAV (GPS) RWY 12

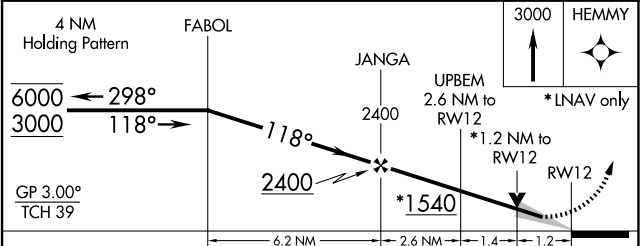
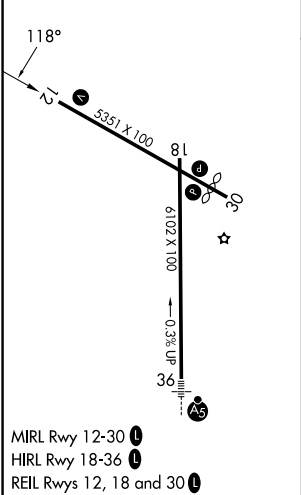
SOUTHEAST IOWA RGNL (B.R.L.)

RNP APCH.	MISSED APPROACH: Climb to 3000 direct HEMMY and hold.
For uncompensated Baro-VNAV systems, procedure NA below -21°C or above 54°C.	

ASOS 118.025	CHICAGO CENTER 135.6 370.95	UNICOM 123.0 (CTAF) 0
------------------------	---------------------------------------	---------------------------------



ELEV 698	D	TDZE 693
----------	----------	----------



CATEGORY	A	B	C	D
LPV DA	943-1 250 (300-1)			NA
LNAV/VNAV DA	1017-1½ 324 (400-1½)			NA
LNAV MDA	1120-1 427 (500-1)	1120-1¼ 427 (500-1¼)		NA
CIRCLING	1180-1 482 (500-1)		1380-2 682 (700-2)	NA