

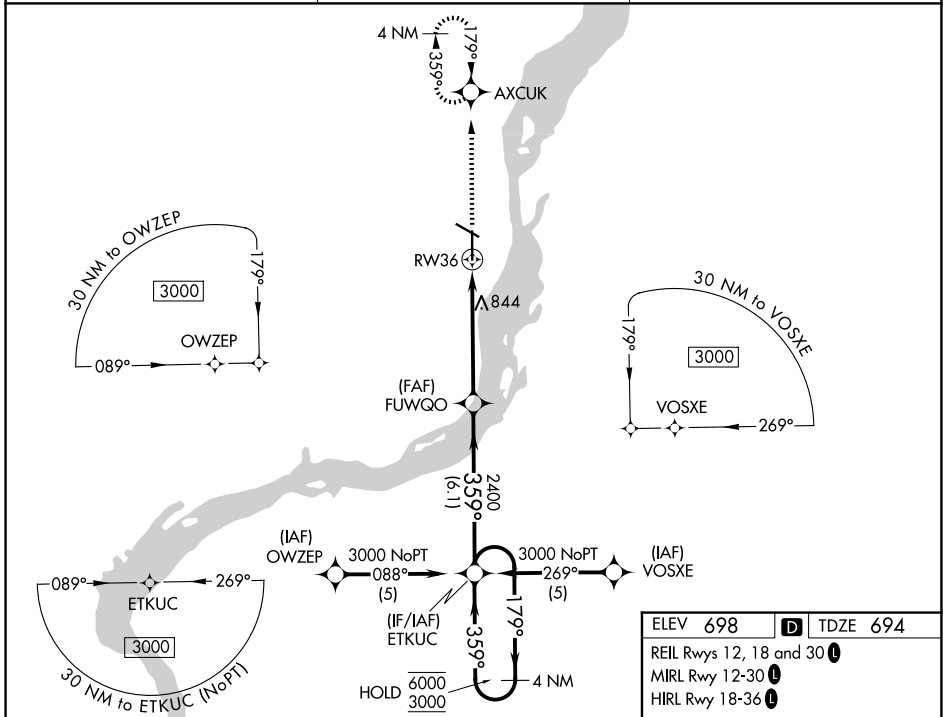
WAAS CH 42711 W36A	APP CRS 359°	Rwy Ldg TDZE Apt Elev	6102 694 698
--	------------------------	-----------------------------	---

RNAV (GPS) RWY 36

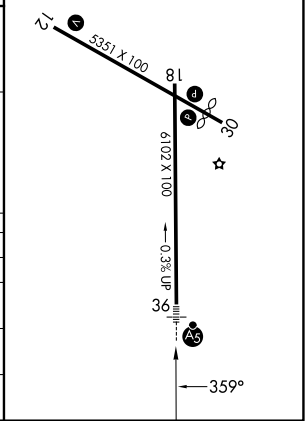
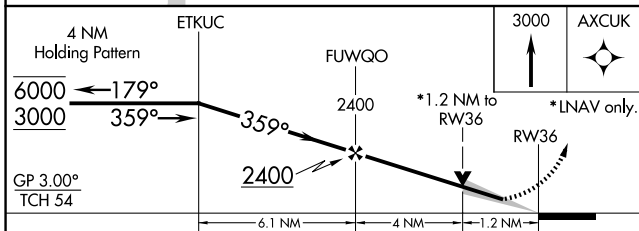
SOUTHEAST IOWA RGNL (B.R.L.)

RNP APCH.	MALSR	MISSED APPROACH: Climb to 3000 direct AXCUK and hold, continue climb-in-hold to 3000.
<p>For uncompensated Baro-VNAV systems, LNAV/VNAV NA below -16°C or above 54°C.</p>		

ASOS 118.025	CHICAGO CENTER 135.6 370.95	UNICOM 123.0 (CTAF)
------------------------	---------------------------------------	-------------------------------



ELEV 698	D TDZE 694
REIL Rwy 12, 18 and 30 L	
MIRL Rwy 12-30 L	
HIRL Rwy 18-36 L	



CATEGORY	A	B	C	D
LPV DA	894-½	200 (200-½)		NA
LNAV/VNAV DA	1026-¾	332 (400-¾)		NA
LNAV MDA	1100-½	406 (500-½)	1100-¾ 406 (500-¾)	NA
CIRCLING	1180-1	482 (500-1)	1380-2 682 (700-2)	NA

NC-3, 11 JUN 2026 to 09 JUL 2026

NC-3, 11 JUN 2026 to 09 JUL 2026