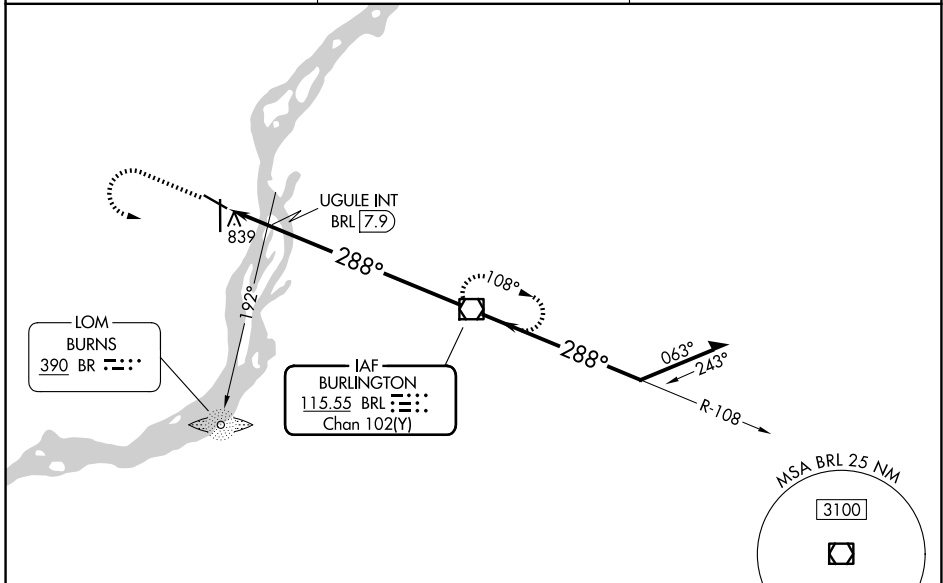


VOR/DME BRL 115.55 Chan 102(Y)	APP CRS 288°	Rwy Ldg TDZE 697 Apt Elev 698
--	------------------------	---

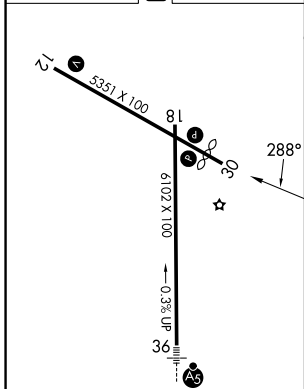
VOR RWY 30
SOUTHEAST IOWA RGNL (B.R.L.)

<p>⚠ Rwy 30 helicopter visibility reduction below 3/4 SM NA.</p>	<p>MISSED APPROACH: Climb to 2000 then climbing left turn to 3000 direct BRL VOR/DME and hold.</p>
---	--

ASOS 118.025	CHICAGO CENTER 135.6 370.95	UNICOM 123.0 (CTAF) 0
------------------------	---------------------------------------	---------------------------------



ELEV 698	D	TDZE 697
-----------------	----------	-----------------



MIRL Rwy 12-30 **0**
HIRL Rwy 18-36 **0**
REIL Rws 12, 18 and 30 **0**

FAF to MAP **9.6 NM**

Knots	60	90	120	150	180
Min:Sec	9:36	6:24	4:48	3:50	3:12

2000	3000	BRL
VGSi and descent angles not coincident (VGSi Angle 3.00/TCH 30). Remain within 10 NM		
BRL 9.6	UGULE INT BRL 7.9	BRL 8.5
1.2	0.5 NM	7.9 NM

CATEGORY	A	B	C	D
S-30	1280-1	583 (600-1)	1280-1 ³ / ₄ 583 (600-1 ³ / ₄)	NA
CIRCLING	1280-1	582 (600-1)	1380-2 682 (700-2)	NA
UGULE FIX MINIMUMS				
S-30	1100-1	403 (500-1)	1100-1 ¹ / ₈ 403 (500-1 ¹ / ₈)	NA
CIRCLING	1180-1	482 (500-1)	1380-2 682 (700-2)	NA

NC-3, 11 JUN 2026 to 09 JUL 2026

NC-3, 11 JUN 2026 to 09 JUL 2026