

KATMN SIX DEPARTURE (RNAV)

AL-74 (FAA)

MESA GATEWAY (IWA)
PHOENIX, ARIZONA

SW-4, 11 JUN 2026 to 09 JUL 2026

**TOP ALTITUDE:
ASSIGNED BY ATC**

DEPARTURE ROUTE DESCRIPTION

TAKEOFF RUNWAYS 12L/C/R: Climb heading 124° or as assigned by ATC. Thence. . . .

TAKEOFF RUNWAYS 30L/C/R: Climb heading 304° or as assigned by ATC. Thence. . . .

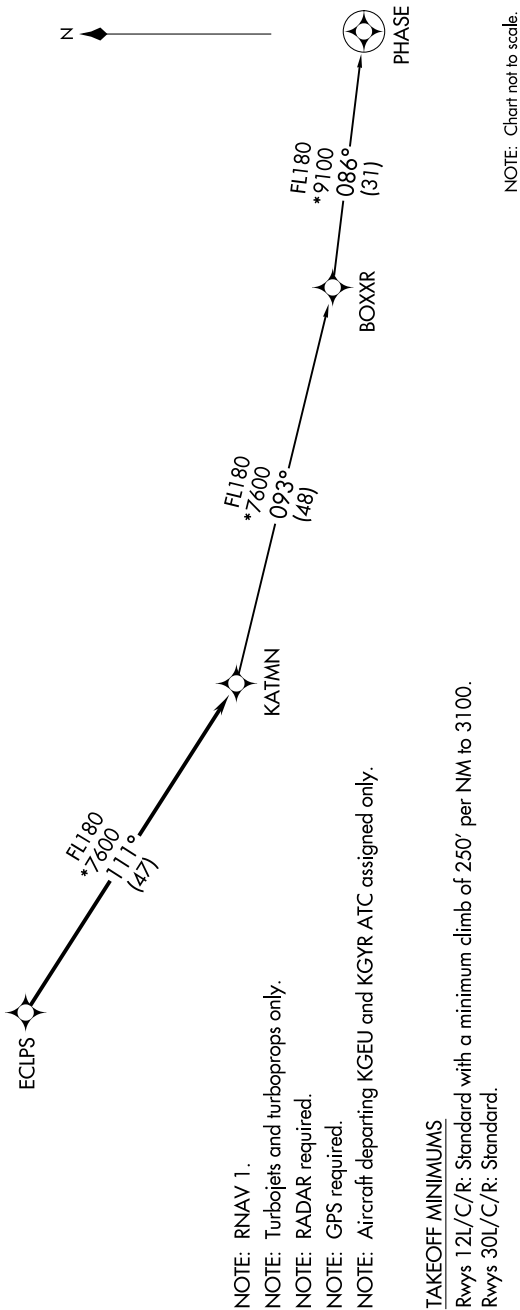
. . . on RADAR vectors to ECLIPS, then on track 111° to KATMN, then on (transition). Maintain ATC assigned altitude, expect filed altitude 3 minutes after departure.

PHASE TRANSITION (KATMN6.PHASE)

PHOENIX DEP CON 124.9 353.8
ATIS 133.5 270 275
CLINC DEL 135.05
GND CON 128.25 275.8
GATEWAY TOWER * 120.6 289.4

KATMN SIX DEPARTURE (RNAV)

PHOENIX, ARIZONA
MESA GATEWAY (IWA)



SW-4, 11 JUN 2026 to 09 JUL 2026