

WAAS CH 58200 W12A	APP CRS 123°	Rwy Ldg 10201 TDZE 1359 Apt Elev 1384
--	------------------------	--

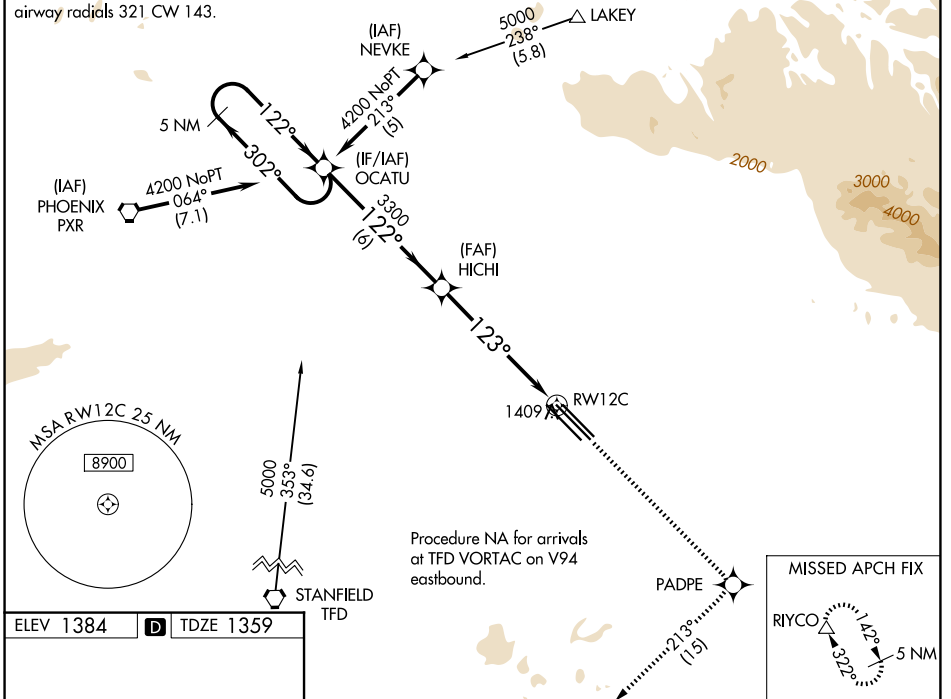
RNAV (GPS) RWY 12C

MESA GATEWAY (IWA)

<p>⚠ DME/DME RNP-0.3 NA. For uncompensated Baro-VNAV systems LNAV/VNAV NA below -17°C (2°F) or above 46°C (115°F).</p>	<p>MISSED APPROACH: Climb to 5000 direct PADPE and on 213° track to RIYCO and hold.</p>
---	---

<p>ATIS 133.5 270.275</p>	<p>PHOENIX APP CON 124.9 353.8</p>	<p>GATEWAY TOWER * 120.6 (CTAF) 289.4</p>	<p>GND CON 128.25 275.8</p>
--------------------------------------	---	--	--

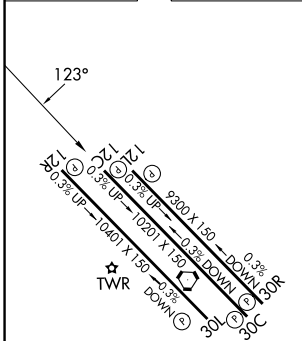
Procedure NA for arrivals on PXR VORTAC
airway radials 321 CW 143.



SW-4, 11 JUN 2026 to 09 JUL 2026

SW-4, 11 JUN 2026 to 09 JUL 2026

ELEV 1384	D	TDZE 1359
-----------	----------	-----------



	5 NM Holding Pattern	OCATU	5000	PADPE	213° tr	RIYCO
	4200 ← 302°	→ 122°	122°	3300	123°	3300
	GP 3.00° TCH 50		*1.1 NM to RWY12C		*LNAV only.	
CATEGORY	A	B	C	D	E	
LPV DA	1609-1		250 (300-1)			
LNAV/VNAV DA	1686-1¼		327 (400-1¼)			
LNAV MDA	1740-1		381 (400-1)		1740-1¼	381 (400-1¼)
CIRCLING	1840-1¼	456 (500-1¼)	1880-1½	2000-2	2020-2¼	496 (500-1½) 616 (700-2) 636 (700-2¼)

MIRL Rwy 12R-30L
HIRL Rwys 12L-30R and 12C-30C
REIL Rwys 12L and 30R