

VORTAC IWA 113.3 Chan 80	APP CRS 302°	Rwy Ldg	30C	30R
		TDZE	10201	9301
		Apt Elev	1380	1382
			1384	1384

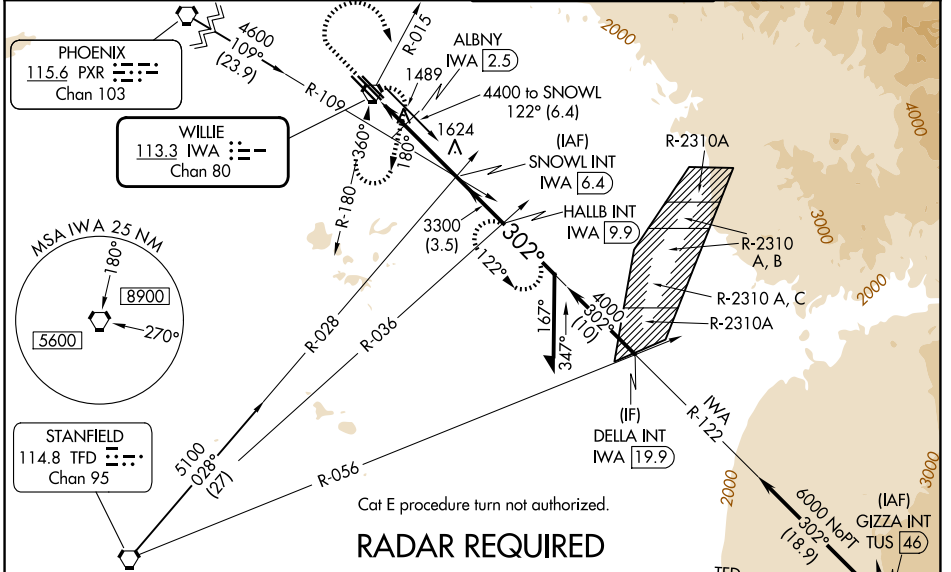
VOR or TACAN RWY 30C

MESA GATEWAY (IWA)

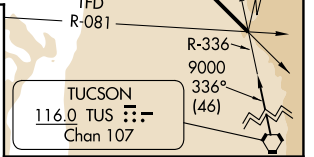
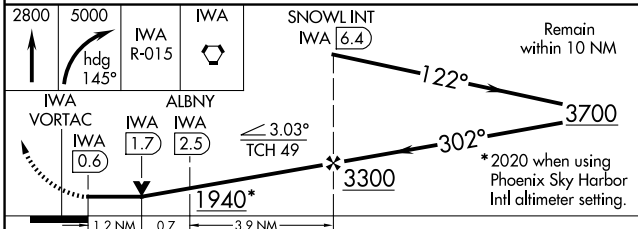
⚠ When local altimeter setting not received, use Phoenix Sky Harbor Intl altimeter setting and increase all MDA 80 feet, increase S-30C, SIDESTEP 30R, and Circling Cats C/D/E visibility ¼ SM.

⚠ MISSED APPROACH: Climb to 2800 then climbing right turn to 5000 via heading 145° and IWA VORTAC R-015 to IWA VORTAC and hold, continue climb-in-hold to 5000 (TACAN aircraft continue via IWA VORTAC R-122 to HALLB INT/IWA 9.9 DME and hold, continue climb-in-hold to 5000, hold SE, LT, 302° inbound).

ATIS 133.5 270.275	PHOENIX APP CON 124.9 353.8	GATEWAY TOWER* 120.6 (CTAF) 289.4	GND CON 128.25 275.8
------------------------------	---------------------------------------	---	--------------------------------



RADAR REQUIRED



CATEGORY	A		B		C	D	E
	1940-1	560 (600-1)	1940-1½	560 (600-1½)	1940-1¾	560 (600-1¾)	560 (600-2)
S-30C	1940-1	560 (600-1)	1940-1½	560 (600-1½)	1940-1¾	560 (600-1¾)	560 (600-2)
SIDESTEP 30R	1940-1	558 (600-1)	1940-1½	558 (600-1½)	1940-2	558 (600-2)	
CIRCLING	1940-1	556 (600-1)	1940-1½	556 (600-1½)	2000-2	616 (700-2)	2020-2¼ 636 (700-2¼)
DME MINIMUMS							
S-30C	1800-1	420 (500-1)	1800-1¼	420 (500-1¼)	1800-1½	420 (500-1½)	
SIDESTEP 30R	1800-1	418 (500-1)	1800-1½	418 (500-1½)	1800-2	418 (500-2)	
CIRCLING	1880-1	496 (500-1)	1880-1½	496 (500-1½)	2000-2	616 (700-2)	2020-2¼ 636 (700-2¼)

ELEV 1384 **D** TDZE 30C 1380
TDZE 30R 1382

HIRL Rwy 12L-30R and 12C-30C
REIL Rwy 12L and 30R
MIRL Rwy 12R-30L

FAF to MAP 5.8 NM

Knots	60	90	120	150	180
Min:Sec	5:48	3:52	2:54	2:19	1:56

SW-4, 11 JUN 2026 to 09 JUL 2026

SW-4, 11 JUN 2026 to 09 JUL 2026