

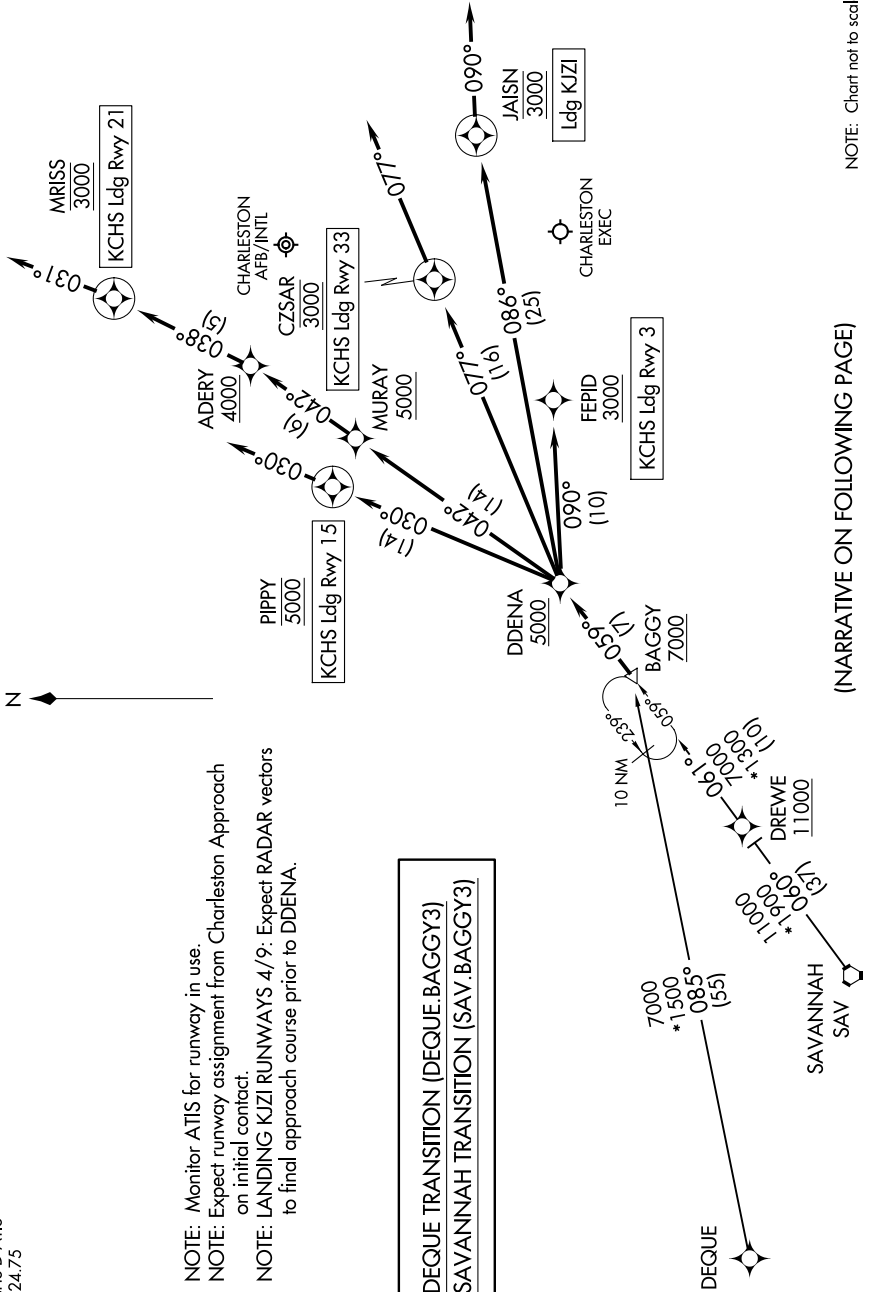
BAGGY THREE ARRIVAL (RNAV)

CHARLESTON, SOUTH CAROLINA

SE-2, 11 JUN 2026 to 09 JUL 2026

CHARLESTON APP CON
120.7 306.925
CHS D-ATIS
124.75

RNAV 1 - DME/DME/IRU or GPS.
RADAR required.



NOTE: Monitor ATIS for runway in use.
 NOTE: Expect runway assignment from Charleston Approach on initial contact.
 NOTE: LANDING KJI RUNWAYS 4/9: Expect RADAR vectors to final approach course prior to DDNA.

DEQUE TRANSITION (DEQUE.BAGGY3)
 SAVANNAH TRANSITION (SAV.BAGGY3)

(NARRATIVE ON FOLLOWING PAGE)

NOTE: Chart not to scale.

SE-2, 11 JUN 2026 to 09 JUL 2026

BAGGY THREE ARRIVAL (RNAV)

CHARLESTON, SOUTH CAROLINA