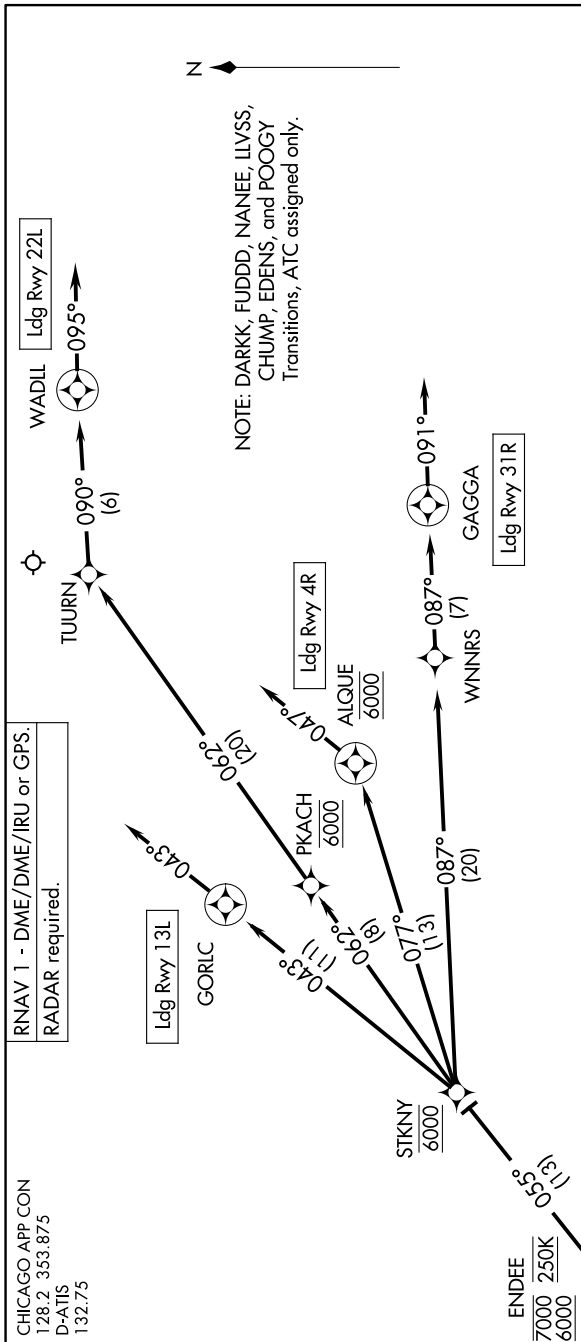


ENDEE EIGHT ARRIVAL (RNAV) Arrival Routes

9200 INT 60 11 JUN 2026 to 09 JUL 2026



RNAV 1 - DME/DME/IRU or GPS.
RADAR required.

CHICAGO APP CON
128.2 353.875
D-ATIS
132.75

ARRIVAL ROUTE DESCRIPTION

From ENDEE on track 055° to cross STKNY at 6000.

LANDING RUNWAY 4R: From STKNY on track 077° to cross ALQUE at 6000, then on track 047° . Expect ILS or LOC RWY 4R approach or RADAR vectors to final approach course.

LANDING RUNWAY 13L: From STKNY on track 043° to GORLC, then on track 043° . Expect RADAR vectors to final approach course.

LANDING RUNWAY 22L: From STKNY on track 062° to cross PKACH at 6000, then on track 062° to TUURN, then on track 090° to WADIL, then on track 095° . Expect RADAR vectors to final approach course.

LANDING RUNWAY 31R: From STKNY on track 087° to WNNRS, then on track 087° to GAGGA, then on track 091° . Expect RADAR vectors to final approach course.

NOTE: Chart not to scale.

ENDEE EIGHT ARRIVAL (RNAV) Arrival Routes

EC-3, 11 JUN 2026 to 09 JUL 2026