

EC-3, 11 JUN 2026 to 09 JUL 2026

ARRIVAL ROUTE DESCRIPTION

From PANGG on track 274° to cross MEGGZ at 1000, then on track 274° to cross AWSUM at 10000, then on track 273° to IROCK, then on track 273° to cross HALIE at 6000.

LANDING RUNWAY 4R: From HALIE on track 278° to cross OLCYK at or above 4000, then on track 278°. Expect RADAR vectors to final approach course.

LANDING RUNWAY 13L: From HALIE on track 279° to cross TINLY at or above 4000, then on track 279°. Expect RADAR vectors to final approach course.

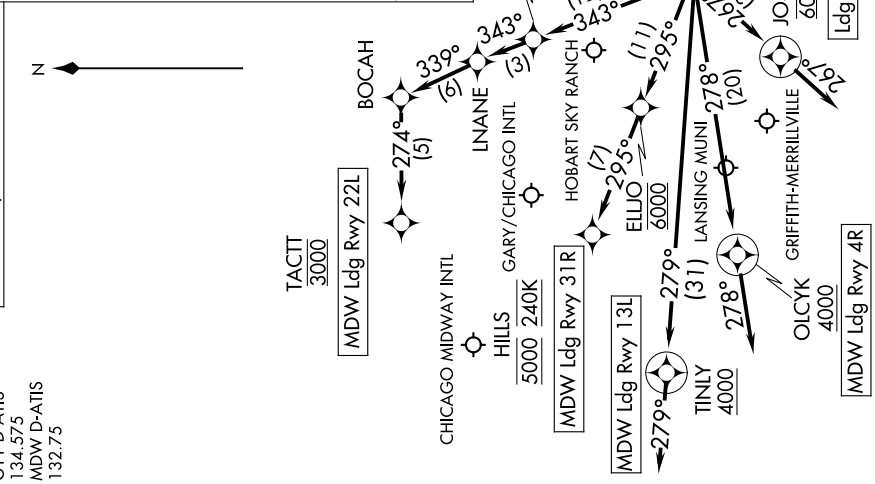
LANDING RUNWAY 22L: From HALIE on track 343° to cross GERMIN at or above 4000, then on track 343° to LNAME, then on track 339° to BOCAH, then on track 274° to cross TACTT at 3000. Expect RNAV Rwy 22L approach or RADAR vectors to final approach course.

LANDING RUNWAY 31R: From HALIE on track 295° to cross ELJO at 6000, then on track 295° to cross HILLS at 5000 and at 240K. Expect ILS or RNAV Rwy 31R approach or RADAR vectors to final approach course.

LANDING 05C/IGQ/3HO/GYY: From PANGG on track 274° to cross MEGGZ at 11000, then on track 274° to cross AWSUM at 10000, then on track 273° to IROCK, then on track 273° to cross HALIE at 6000, then on track 267° to cross JOSSH at 6000, then on track 267°. Expect RADAR vectors to final approach course.

LOST COMMUNICATIONS:  
RUNWAY 22L: If approach clearance not received by TACTT, proceed inbound on RNAV (GPS) or RNAV (RNP) Rwy 22L routing.

CHICAGO APP CON 128.2 353.875  
GYV D-ATIS 134.575  
MDW D-ATIS 132.75



NOTE: Landing Rwy 31R: For non-RNP aircraft, expect RADAR vectors to final approach course.

Ldg 05C, IGQ, 3HO, GYY  
MDW Ldg Rwy 4R

NOTE: Chart not to scale.

EC-3, 11 JUN 2026 to 09 JUL 2026