

LOC/DME I-PVY <b>111.55</b>	APP CRS <b>238°</b>	Rwy Ldg TDZE Apt Elev	<b>9000</b> <b>780</b> <b>799</b>
Chan <b>52(Y)</b>			

# ILS RWY 24R (SA CAT I)

## CLEVELAND-HOPKINS INTL (CLE)

DME required. Aircraft not DME/DME/IRU or GPS equipped - RADAR required for procedure entry. RNAV 1. From LLROY and BUDRW: RNAV 1-DME/DME/IRU or GPS required for procedure entry.

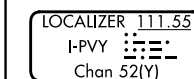
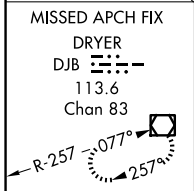
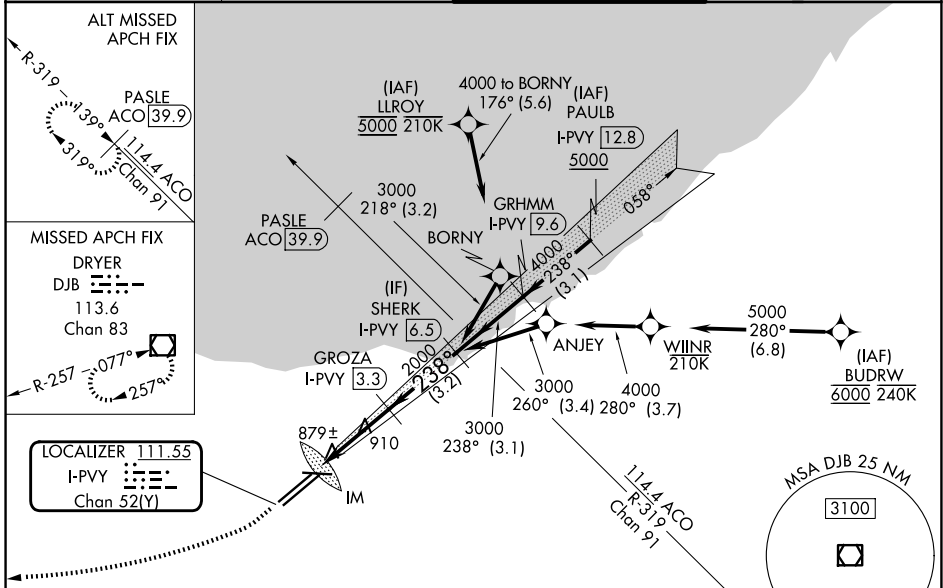
Requires specific OPSPEC, MSPEC, or LOA approval and use of HUD to DH. Simultaneous approach authorized. Simultaneous operations require use of vertical guidance; maintain last assigned altitude until established on glideslope.

ALSF-2

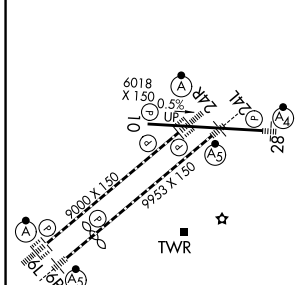


MISSED APPROACH: Climb to 1700 then climbing right turn to 3000 direct DJB VOR/DME and hold.

D-ATIS <b>127.85</b>	CLEVELAND APP CON <b>126.55 346.325</b>	CLEVELAND TOWER <b>124.5 273.45</b>	GND CON <b>121.7 273.45</b>
-------------------------	--	--	--------------------------------



ELEV 799	<b>D</b>	TDZE 780
----------	----------	----------



1700	3000	DJB	VGSJ and ILS glidepath not coincident (VGSJ Angle 3.00/TCH 65).
		SHERK I-PVY 6.5	
		GROZA I-PVY 3.3	
		IM	
		2000	
		2000	
		3000	
		GS 3.00°	TCH 55
1064'	3.7 NM	3.2 NM	

CATEGORY	A	B	C	D
S-ILS 24R	RA 150/14 150 DA 930			

**SA CATEGORY I ILS - SPECIAL AIRCREW & AIRCRAFT CERTIFICATION REQUIRED**

REIL Rwy 10  
TDZ/CL Rwy 6L, 6R, 24L and 24R  
HIRL Rwy 6L-24R, 6R-24L and 10-28

EC-2, 11 JUN 2026 to 09 JUL 2026

EC-2, 11 JUN 2026 to 09 JUL 2026