

LOC/DME I-LIZ 111.55 Chan 52(Y)	APP CRS 058°	Rwy Ldg 9000 TDZE 773 Apt Elev 799
--	------------------------	---

ILS RWY 6L (CAT II & III)

CLEVELAND-HOPKINS INTL (CLE)

From GROHL, HICKR, and KWENE: RNAV 1-DME/DME/IRU or GPS required for procedure entry. Aircraft not DME/DME/IRU or GPS equipped - RADAR required for procedure entry. RNAV 1.

ALSIF-2



MISSED APPROACH: Climb to 1800 then climbing left turn to 3000 on heading 350° and DJB VOR/DME R-054 to PASLE/DJB 20 DME and hold.

DME required.

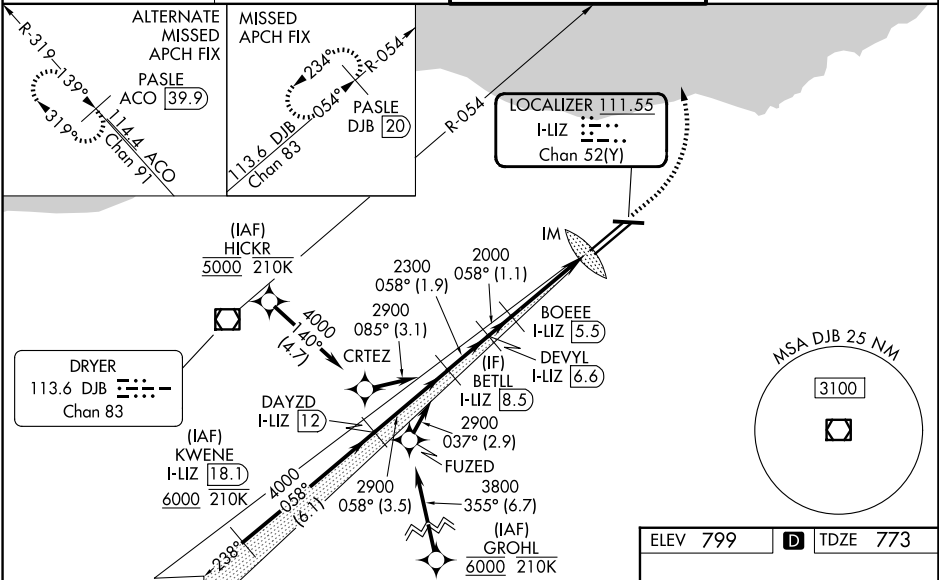
T Simultaneous approach authorized.
Simultaneous operations require use of vertical guidance; maintain last assigned altitude until established on glideslope.

D-ATIS
127.85

CLEVELAND APP CON
126.55 346.325

CLEVELAND TOWER
124.5 273.45

GND CON
121.7 273.45



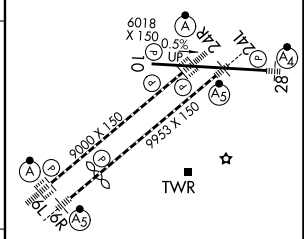
EC-2, 11 JUN 2026 to 09 JUL 2026

EC-2, 11 JUN 2026 to 09 JUL 2026

VGSI and ILS glidepath not coincident (VGSI Angle 3.00/TCH 69).



ELEV 799	D	TDZE 773
----------	----------	----------



REIL Rwy 10
TDZ/CL Rwy 6L, 6R, 24L, and 24R
HIRL Rwy 6L-24R, 6R-24L and 10-28

BETLL I-LIZ [8.5]	DEVYLL I-LIZ [6.6]	BOEEEE I-LIZ [5.5]	IM 872	
2900	2300	2000	2000	
058°				
GS 3.00°				
TCH 55				
1.9 NM	1.1 NM	3.7 NM	1036'	
CATEGORY	A	B	C	D
S-ILS 6L	CAT II RA 111/12 100 DA 873			
S-ILS 6L	CAT III RVR 06			

CATEGORY II & III ILS - SPECIAL AIRCREW & AIRCRAFT CERTIFICATION REQUIRED